



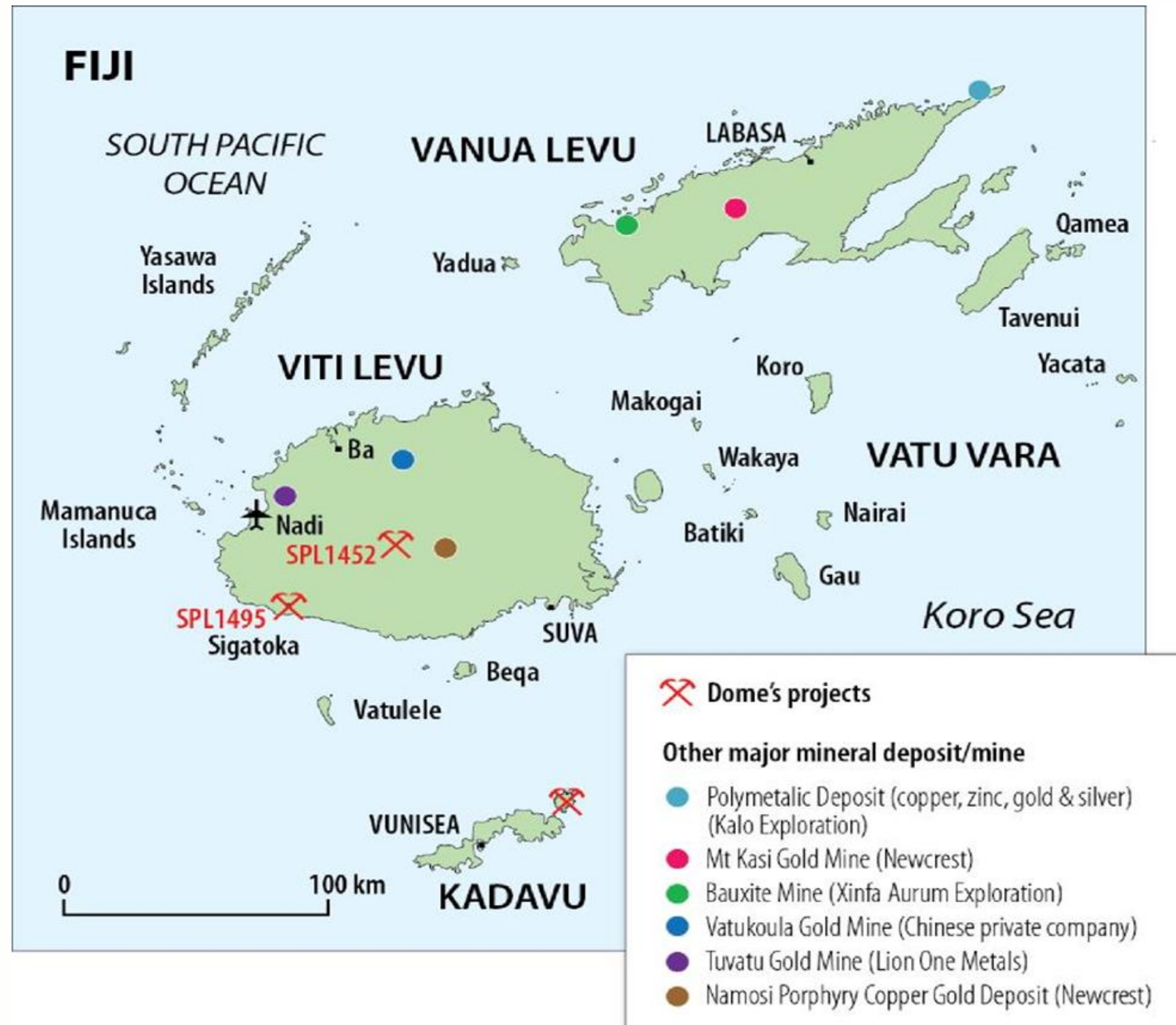
DO ME
GOLD MINES

NADRAU

COPPER-GOLD PROJECT

SPL1452 (33,213 ha)

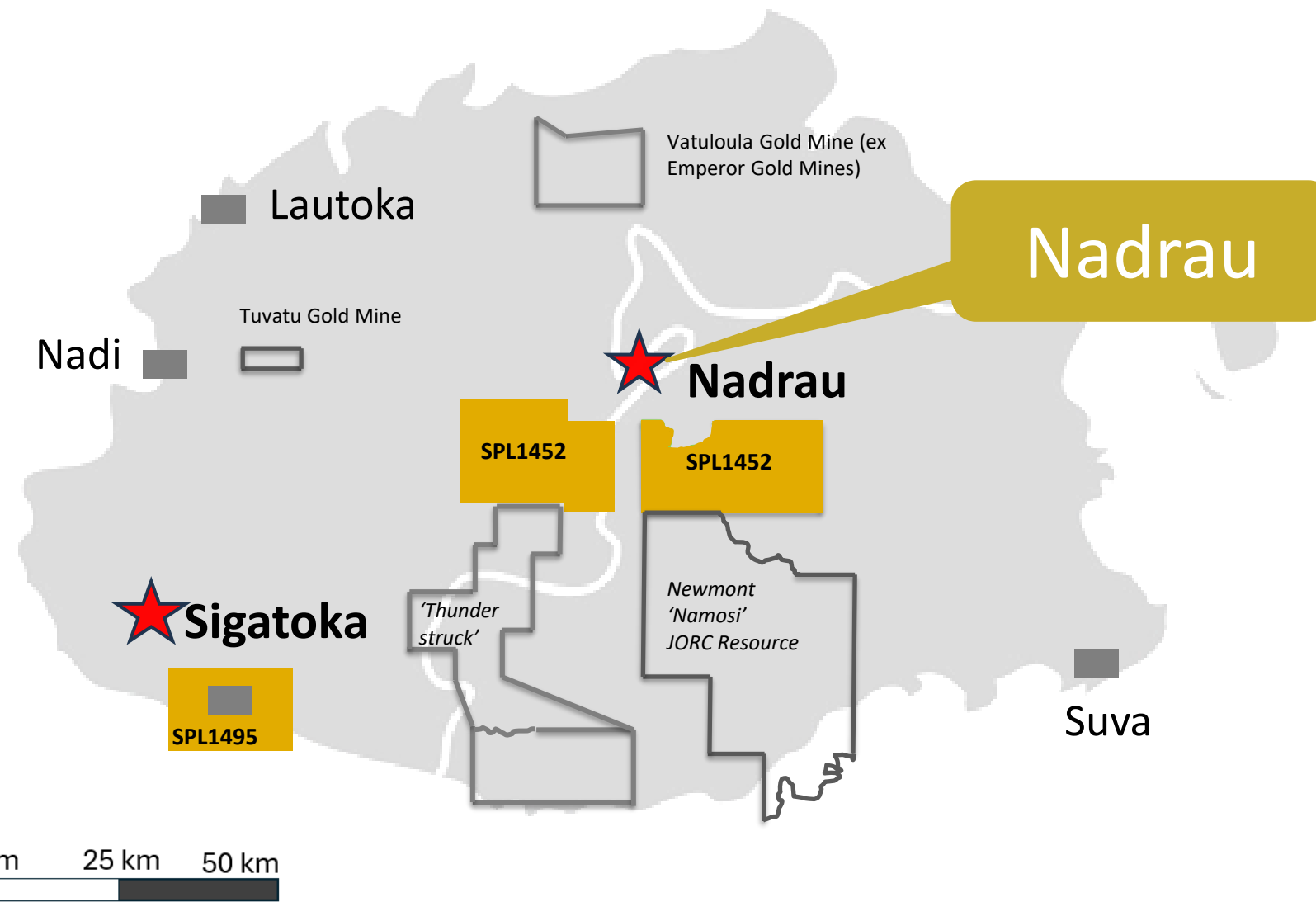
FIJI – HOST TO SEVERAL LARGE CU-AU SYSTEMS



- Fiji is highly prospective for Copper-Gold, Porphyry-Epithermal systems
- Fiji is host to 3 major Copper-Gold resources
- **Namosi** is one of the world's largest undeveloped Copper-Gold deposits
 - ~11.4 M oz Gold
 - ~11.1 Mt contained Copper
- **Vatikoula** Gold Mine, operated since 1935
 - Gold production ~7.5M oz Gold
 - Current resource ~4.8M oz Gold
- **Tuvatu Gold** mine operated by Canadian Lion One
 - ~ 1.2 M oz Gold
- **Nadrau** (Dome SPL 1452) located
 - 15 km to the NE of Namosi

DOME PROJECTS RELATIVE TO OTHER SIGNIFICANT MINERAL DEPOSITS

- Dome Project Areas
- Other Gold/copper Explorers & Miners
- Capital/major towns

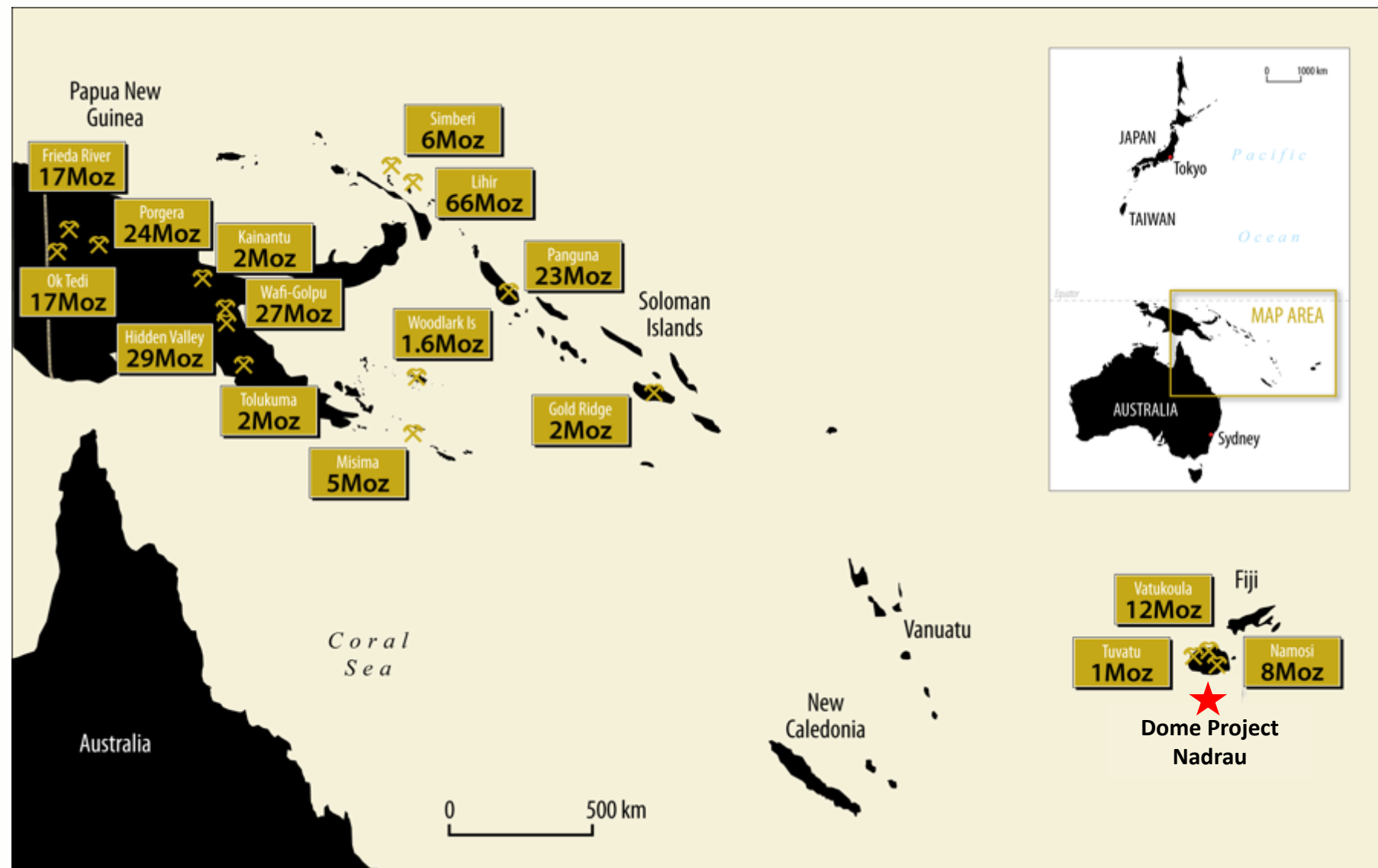


Viti Levu topography

Nadrau SPL1452 - 100% owned by Dome 33,213 Hectares licence area
 Sigatoka SPL1495 – 100% owned by Dome 2,522 Hectares licence area

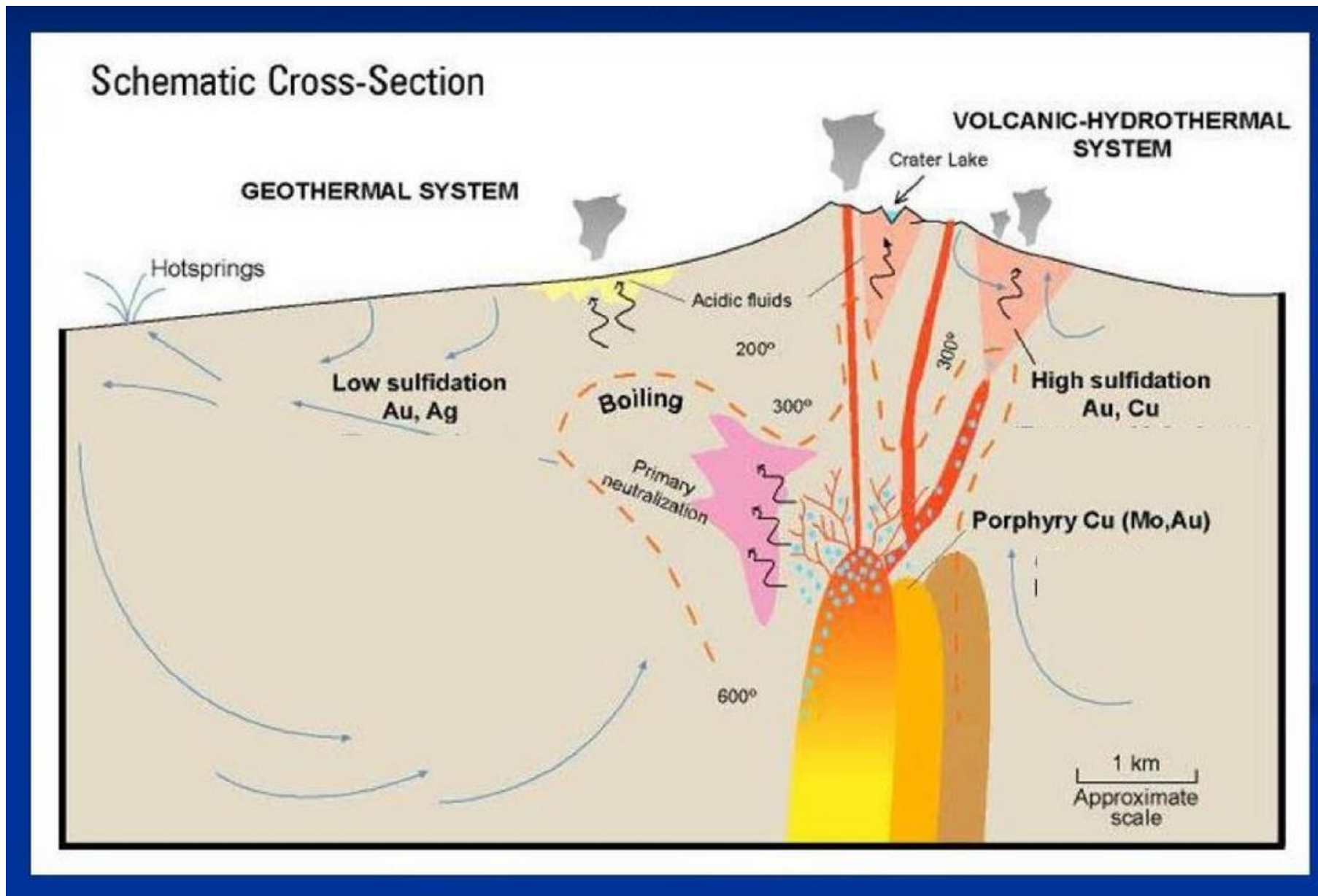
**Other operating gold/copper mines and major gold exploration areas shown only for locational context*

FIJI – PART OF THE CU-AU PACIFIC RING OF FIRE



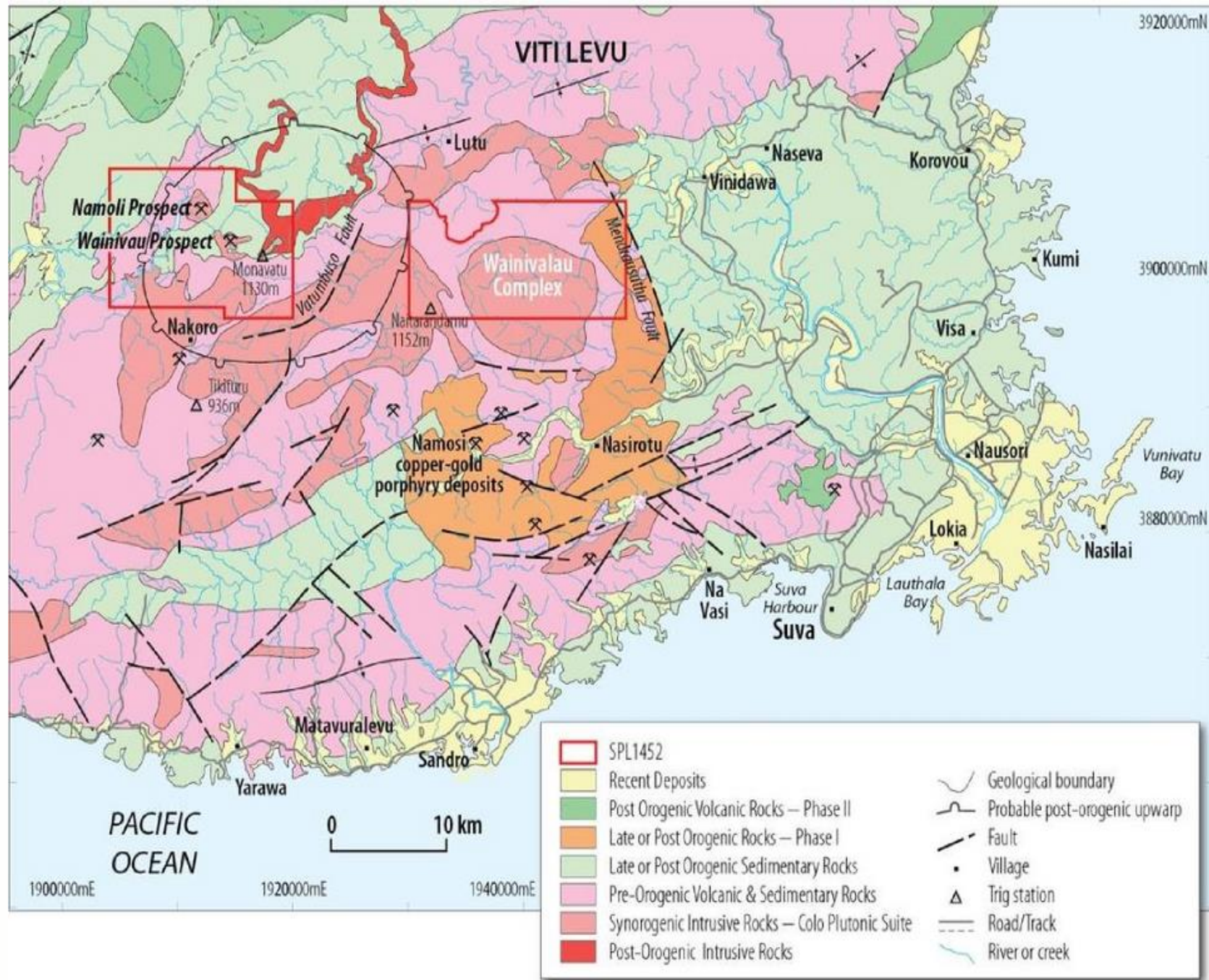
- The Pacific Ring of Fire or Pacific Rim hosts major multi-million oz Gold-Copper-Silver deposits (e.g. Indonesia, PNG, Solomon Islands, Fiji)
- Fiji is host to 3 major Gold and Copper deposits
- Fiji is underexplored relative to the other Pacific Rim countries

PORPHYRY-EPITHERMAL CU-AU TARGETS



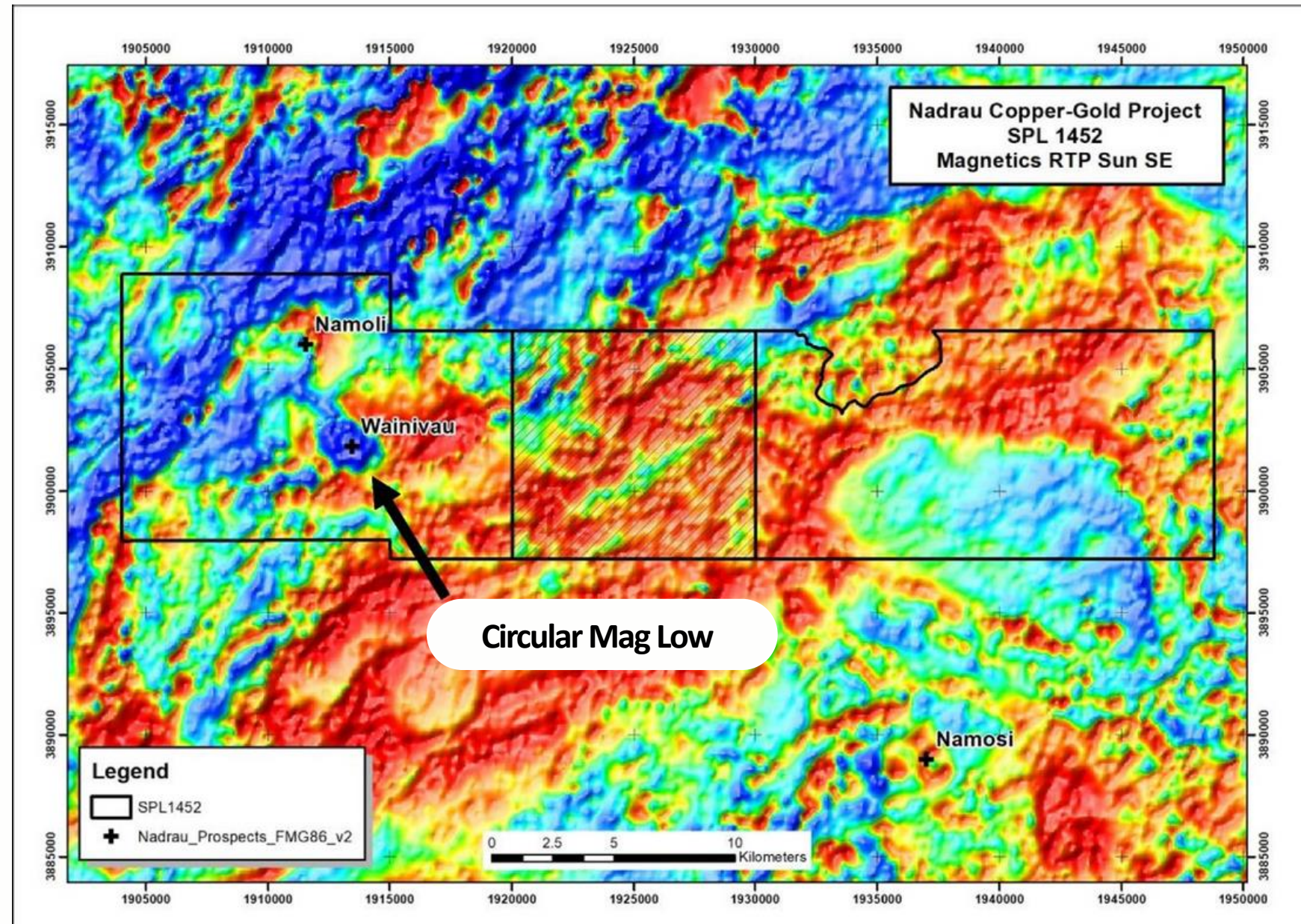
- The principal target for the Nadrau Project is a large porphyry system similar to Namosi and other Pacific Ring of Fire deposits (e.g. Ok Tedi & Porgera in PNG).
- Another important target is High Grade Alkaline volcanic hosted Gold (e.g. Vataukola, Tuvatu)

NADRAU – LOCATED NEXT TO NAMOSI CU-AU PORPHYRY



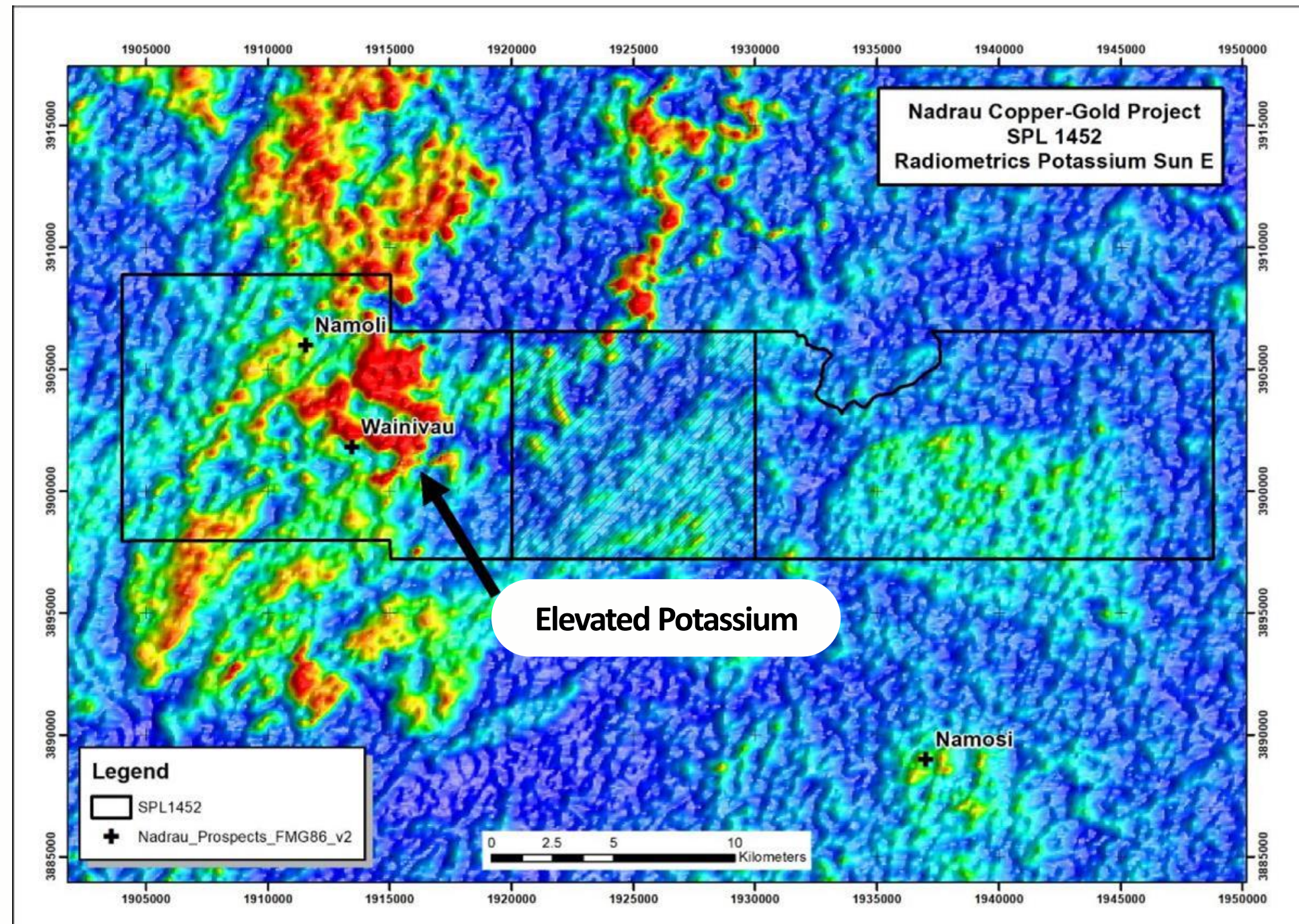
1. Nadrau is secured by Dome’s Special Prospecting Licence SPL 1452 (33,213 ha)
 - 2 Main porphyry Copper-Gold prospects - Namoli and Wainivau
 - Hosted by Miocene Colo Plutonic Suite
 - Lies adjacent to the large undeveloped Namosi Porphyry Copper-Gold resource:
 - **11.4 million ounces Au**
 - **11.1 million tonnes contained Copper**
- JORC 2012 Inferred/Indicated Mineral Resources (*See Newcrest 2018 Mineral Resources Statement 14 Feb 2019 – Newmont acquired Newcrest in 2024*)
- The Namosi JV is now managed by Newmont (71%) and is at a DFS stage.

NADRAU – REGIONAL MAGNETICS



- Wainivau prospect shows a prominent circular-shaped magnetic low anomaly (2.5 km across), typical of many porphyry systems.
- This discrete magnetic low is most likely due to demagnetization of the intrusion, resulting from hydrothermal alteration and mineralisation.
- Wainivau-Namoli also lies along major NW-NE trending regional faults, observed in the magnetic images.

NADRAU – REGIONAL RADIOMETRICS

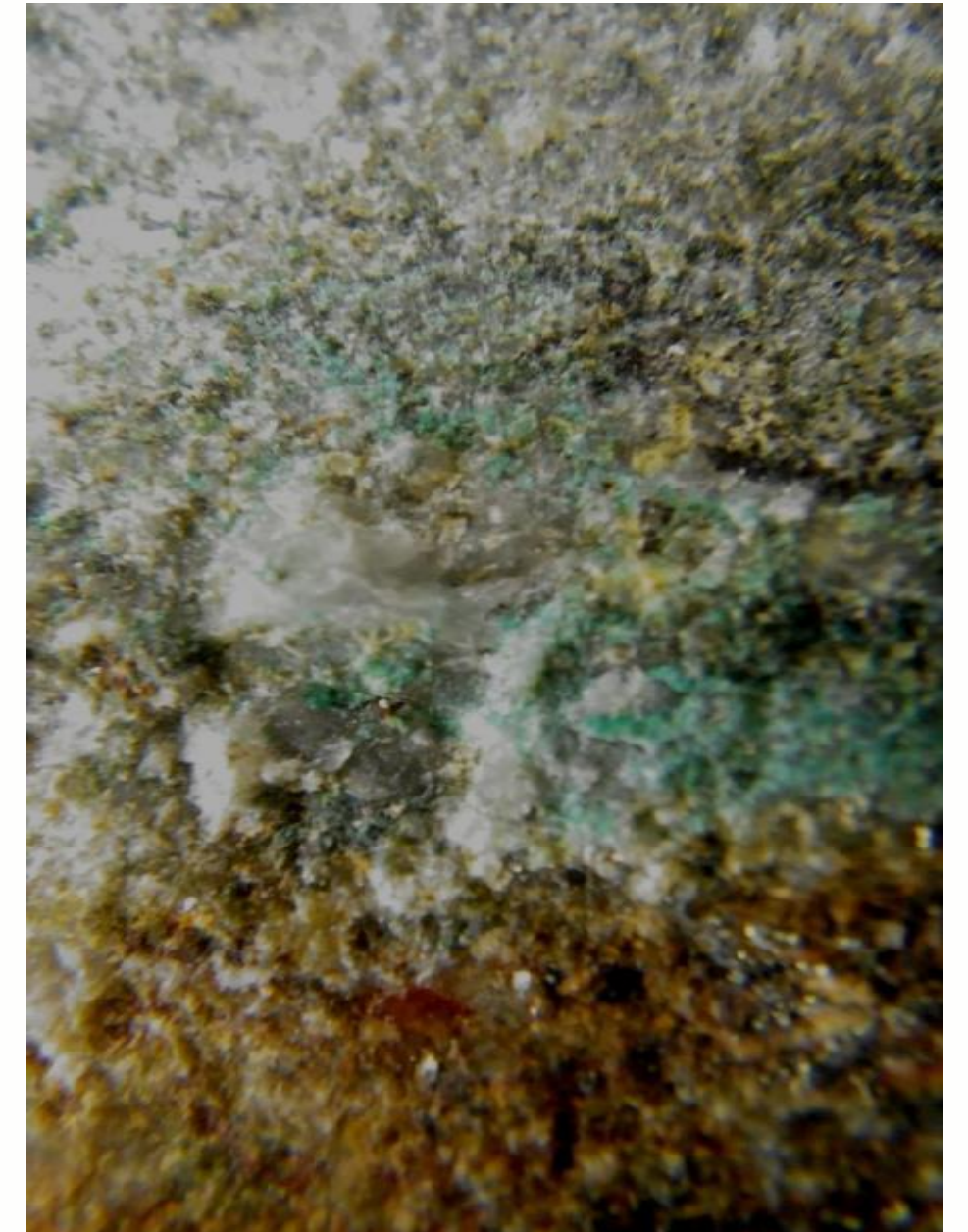


- Namoli-Wainivau prospects shows Elevated Potassium (K) in radiometric images.
- The Elevated K is probably due to potassic alteration, which is a common alteration product of porphyry systems.

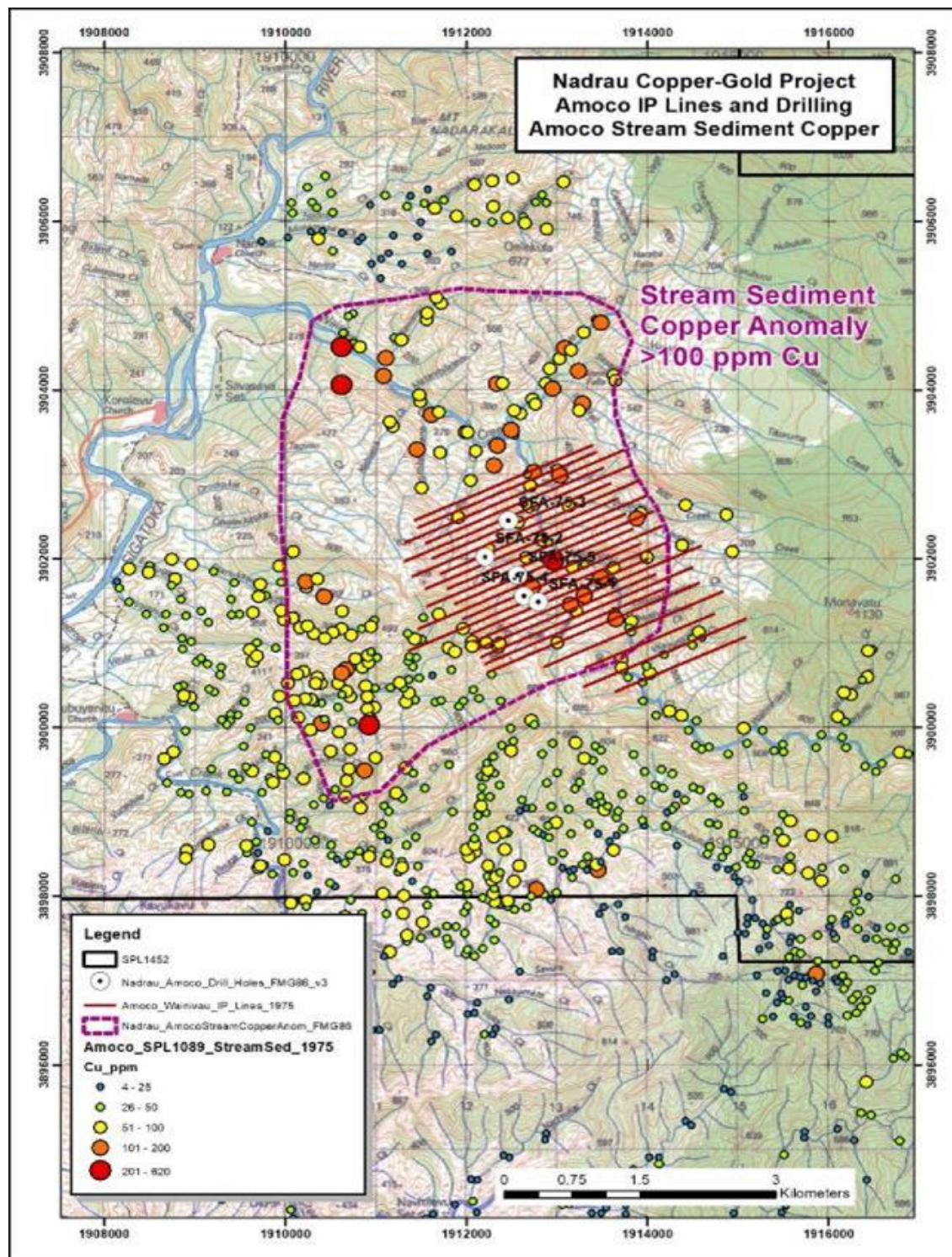
HISTORICAL PORPHYRY EXPLORATION 1969 - 1994

- **Four previous companies completed exploration programs in the SPL 1452 area:**
 - Barringer (1969),
 - Amoco (1973-76),
 - CRA (1989-92) and
 - Placer Dome (1993-94).
- **Previous exploration programs over Wainivau-Namoli prospects include:**
 - Geological mapping,
 - Widespread geochemical sampling (stream sediments, soils, rock chips),
 - Geophysical surveys at Wainivau (magnetics and IP) and
 - Diamond drilling at Wainivau (5 Amoco drill holes).
- **Placer (1993) quoted:**
 - Amoco's drilling at Wainivau did not adequately test their soil and IP anomalies, and their drill holes are largely outside the main Cu geochemical soil anomaly.
 - Amoco's drilling appears to be into the outer edge of the propylitic zone of a porphyry model.
 - The limited work to date has not fully tested the potential to host a large Copper-Gold porphyry.
 - The prospectivity of this area for significant tonnage Copper-Gold mineralisation remains high

Therefore, further exploration work is recommended.

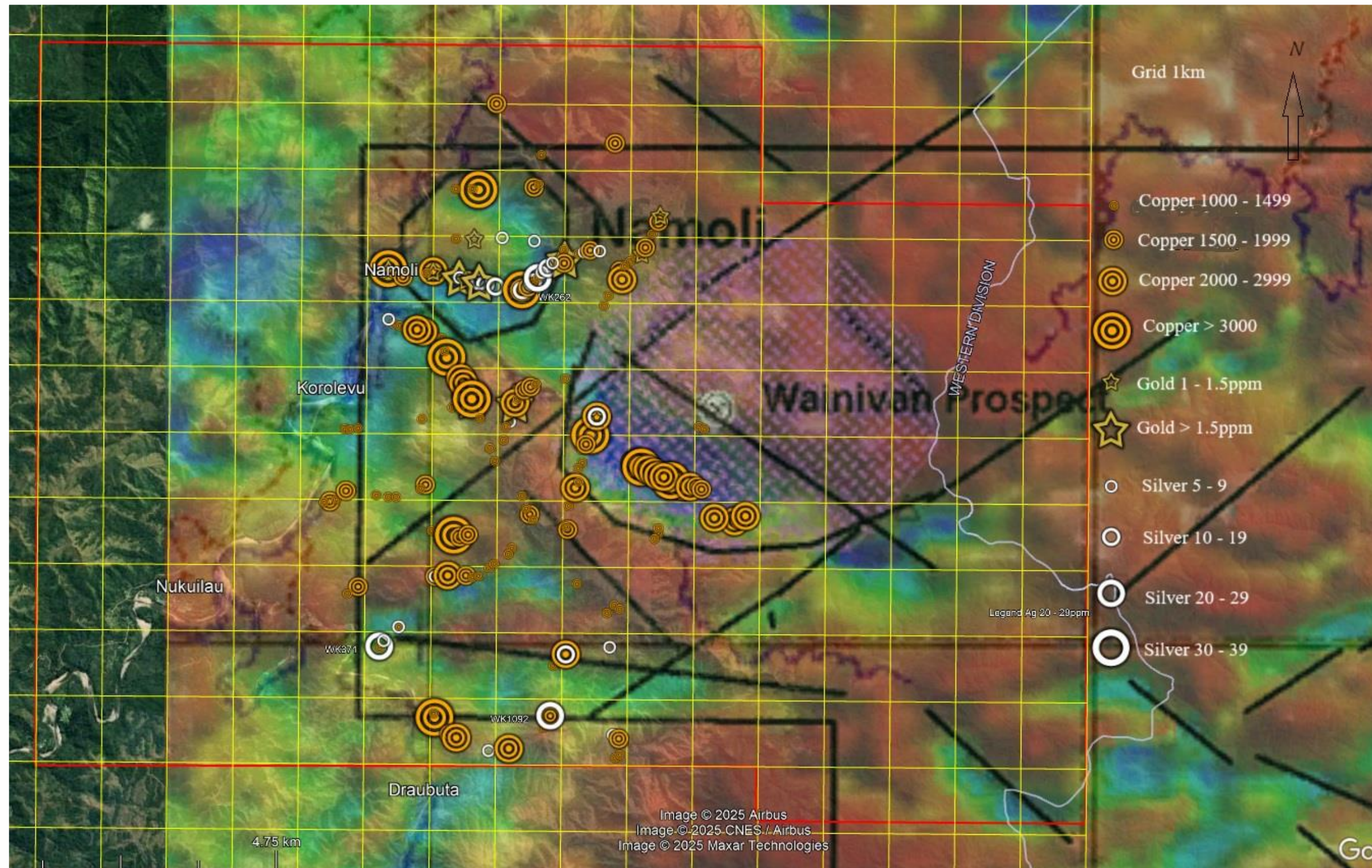


HISTORICAL EXPLORATION – AMOCO 1973 - 1976



- Stream sediment geochemical data from Amoco, defines a large area of elevated Copper (>100 ppm Cu) in the Wainivau-Namolli area. This high Copper anomaly spans several km in length. Many samples returned >200 ppm Cu.
- Historical surface rock chip samples are elevated in Cu-Au, and have returned assays up to 1.1 g/t Au and 0.56% Cu.
- Amoco's IP survey at Wainivau included 25 lines at 200 m spacing over an area of approximately 3.5 km². Only 2 of the 6 IP targets were drill tested by Amoco, and 4 remain untested. Some IP anomalies continue to the edge of the northern survey boundary and are likely to extend further north toward Namolli.
- Amoco drilling (5 holes) targeted 2 of the Wainivau IP targets. Drill assays returned anomalous Copper mineralisation associated with sulphide mineralisation. Drill core assays were recorded up to 0.17% Cu, with wide zones of low-grade Copper in some holes (e.g., hole SFA-74-1 returned 48.2m @ 475 ppm Cu). Follow-up drilling was recommended but never completed.

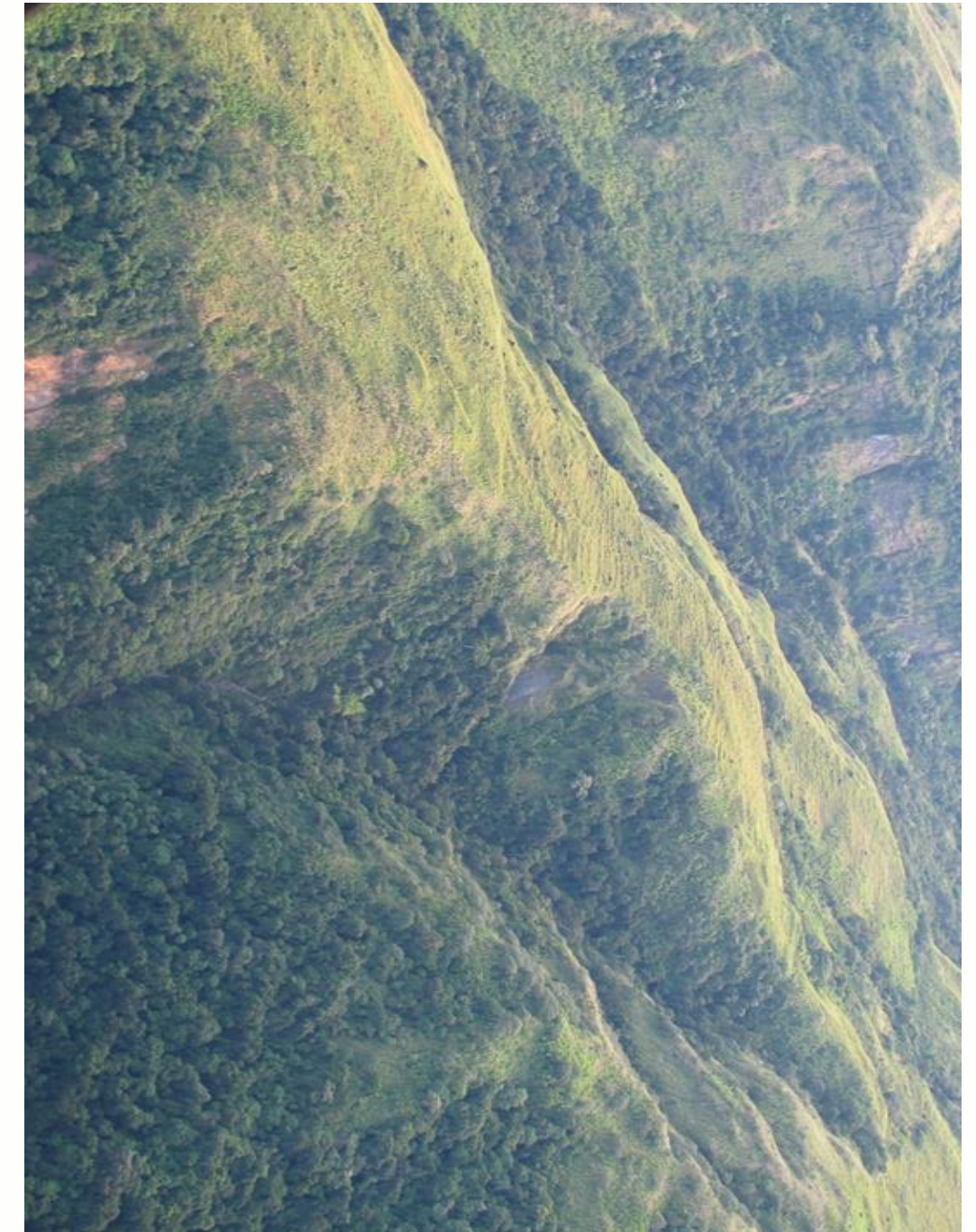
EXPLORATION DATA COMPILATION



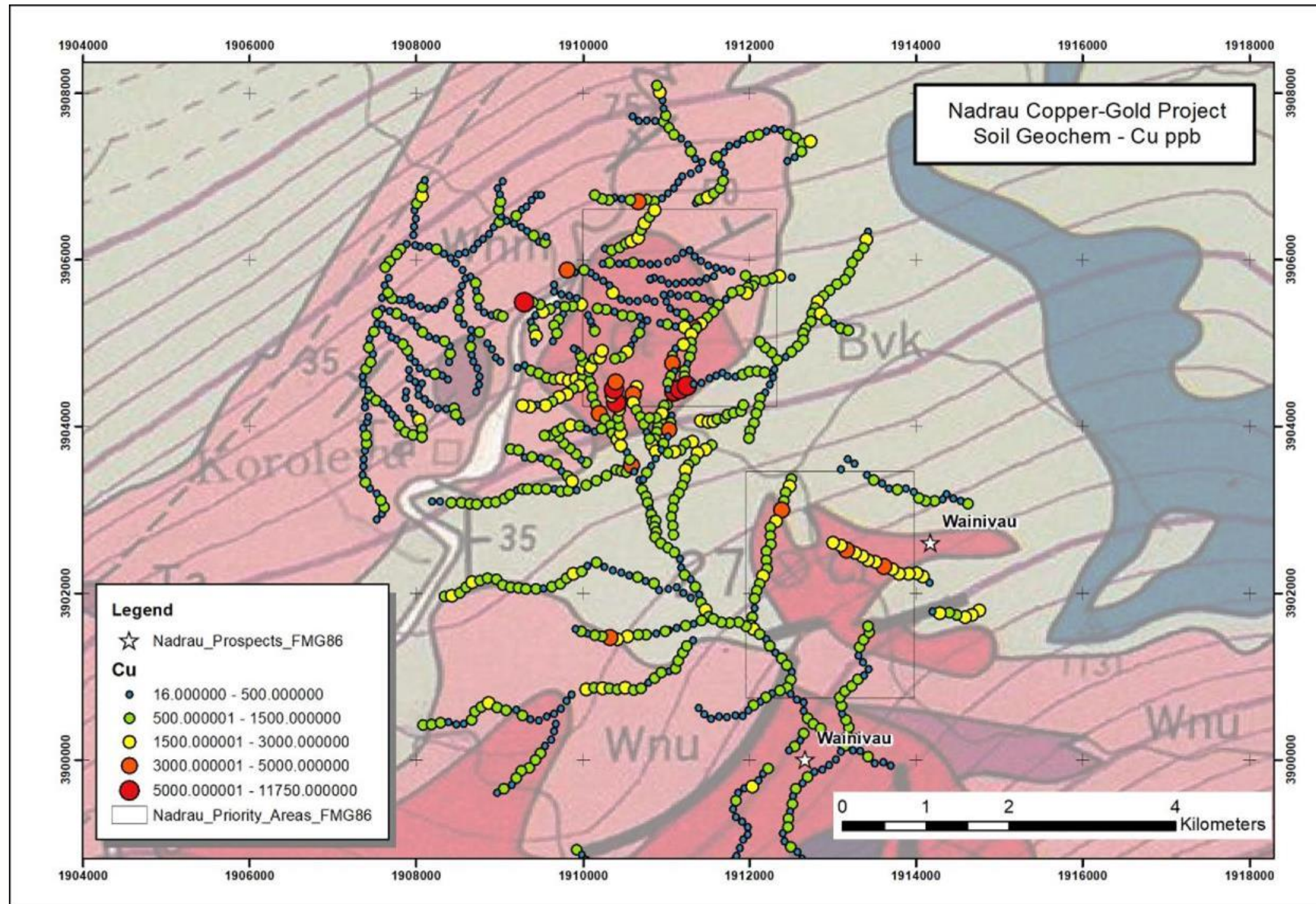
Locations of historical and Dome rock chips and assay data for copper, gold and silver showing persistent 6.5 km long NW-SE linear anomalous structure crossing the Namoli-Wainivau prospect area. Sample locations are superimposed on the high-altitude airborne magnetometer survey map.

DOM E EXPLORATION (2013-2022)

- Dome's recent exploration programs include:
 - Digital capture and interpretations of previous exploration datasets.
 - Geological mapping (lithology, alteration, structural mapping).
 - Geochemical sampling (stream sediments, soils, rock chips).
 - Exploration program design.
 - Community consultation work.
- Dome's geochemical survey results verified the strong geochemical anomalism over Wainivau-Namoli (originally identified Amoco, etc.).
- Dome's geochemical results highlight a large area of anomalous Copper-Gold-Silver-Zinc-Moly in the Namoli-Wainivau area, consistent with a large porphyry system.
- The elevated geochemical zone includes a NW trending iron-oxide breccia zone, which coincides with some of Amoco's IP anomalies, (some of which have not been drill tested).



DOME SOIL SAMPLING



Dome's ridge and spur soil sampling program returned elevated Copper, Gold, Lead, Zinc and Moly over the Wainivau and Namoli prospects.

DOM E ALTERATION MAPPING AND ROCK SAMPLING



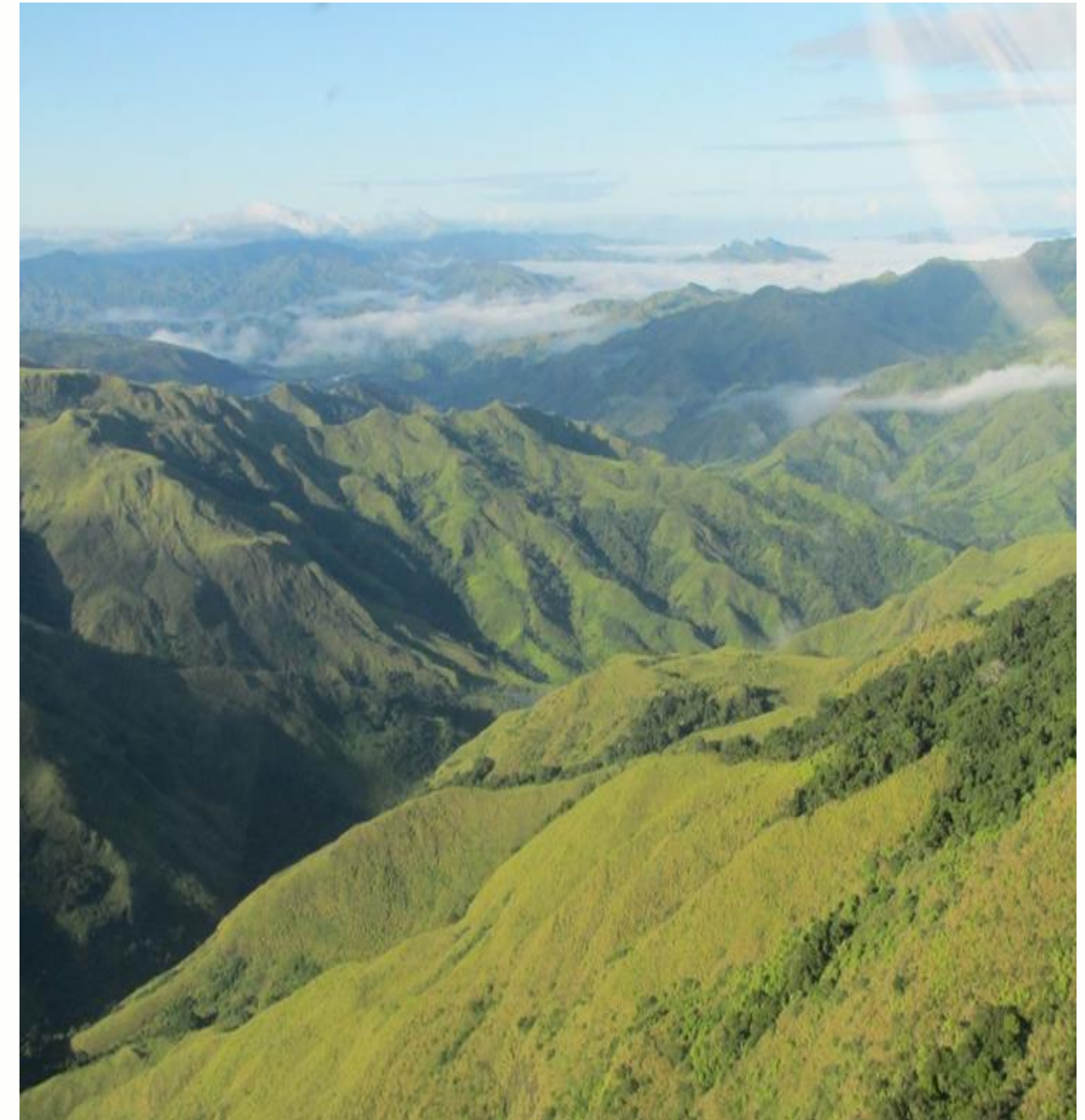
- A large area of iron-oxide breccia lies to the NW of the main Wainivau prospect and extends several km to the NW to Namoli.
- This breccia zone coincides with some of the undrilled IP anomalies.
- Rock chip assays from altered rock samples and iron-oxide breccias are elevated in Cu-Au (e.g., up to 0.14% Cu).

NADRAU – NEXT STEPS

The Wainivau-Namoli prospects contain many geological-geochemical-geophysical attributes of large Copper-Gold porphyry systems. The area also has similarities to the nearby Namosi deposits (~11.4 M oz Gold & 11.1 Mt contained Copper metal).

Proposed future exploration includes:

- Detailed alteration mapping and PIMA (spectral) survey to define alteration
 - Zonation and geometry of the porphyry system.
- Geophysical surveys (aerial magnetics and magneto telluric/DIGEM)
 - Airborne magnetics (drone), to map out porphyry intrusions, alteration zones and structures (including 3D magnetic depth modelling).
 - MT or DIGEM surveys to define deeper target areas with sulphide mineralisation.
- Drilling of the best targets, with the aim to define a giant porphyry system.



NADRAU PROJECT SUMMARY

The Nadrau Project (Namoli and Wainivau) is highly prospective for large Cu-Au porphyry systems.

The project:

- Is located adjacent to Newmont's Namosi Cu-Au porphyry deposit (11.4 M oz Gold & 511.1 Mt Copper metal).
- Contains alkaline intrusive porphyry host rocks, iron-oxide breccias and alteration typical of a porphyry intrusive system.
- Shows a circular magnetic low feature and potassium high anomaly, typical of porphyry systems.
- Has a large geochemical footprint area several km across, with elevated Copper and Gold, plus Silver, Zinc, and Molybdenum (typical of a porphyry assemblage).
- Contains rock chip samples at surface up to 1.1 g/t Au and 0.56% Cu.
- Contains untested IP targets (Amoco drilled shallow holes into only 2 of their 6 anomalies).
- Contains significant intervals of anomalous Copper mineralisation in minor drilling to date (up to 0.17% Cu) *Note: Amoco's drilling appears to be into the outer edge of the propylitic zone of a porphyry model.
- Has strong potential for significant tonnage Copper-Gold porphyry mineralisation (also noted by Placer in 1993).



A program of mapping and geophysical surveys has been designed, to define targets for drilling.

DOME GOLD MINES LIMITED

ABN 49 151 996 566

The Brewery, Suite 605, Level 6 Central Park Ave,
Chippendale NSW 2008
GPO Box 1759
Sydney NSW 2001 Australia

Web: www.domegoldmines.com.au

Enquiries

Jack McCarthy, Chairman

E: info@domegoldmines.com.au

T: +61 2 8203 5620

A data package is available for review, including: Historical reports, Company reports, GIS database.

Disclaimer: This presentation is provided solely on the basis that the Recipient will be responsible for making their own assessment of the matters presented. The Recipient is advised to verify all relevant representations, statements and data, which are largely taken from historical exploration reports. The owner makes no warranty or representation (express or implied), nor does it accept liability in relation to the accuracy, reliability or completeness of the contents of this presentation.