



Company Presentation

Sigatoka Construction Sands &
Magnetite Project - Fiji

June 2026

DOMEGOLDMINES.COM.AU

ASX:DME

Important Information and Disclaimer



The information contained in this Presentation has been prepared by Dome Gold Mines Ltd (“Dome Gold”) to assist in informing interested parties about the Company and its progress. It should not be considered as an offer or invitation to subscribe for or purchase any securities in Dome or as an inducement to make an offer or invitation with respect to securities in the Company. It is of a general nature and does not purport to include or summarise all information that an investor should consider when making an investment decision and does not and will not form the basis of any contract or commitment for the acquisition of shares. . The Presentation does not contain all the information which would be required in a product disclosure statement, prospectus or other disclosure document prepared in accordance with the requirements of the Corporations Act 2001 (Cth) (Corporations Act

Before making an investment decision, prospective investors should consider the appropriateness of the information (including but not limited to the assumptions, uncertainties and contingencies which may affect future operations of the Company and the values and the impact that different future outcomes may have on the Company) having regard to their own investment objectives, financial situation and needs and should seek legal, accounting and taxation advice appropriate to their jurisdiction. You should conduct your own investigation and perform your own analysis in order to satisfy yourself as to the accuracy and completeness of the information, statements and opinions contained in this presentation and making any investment decision

Future performance and forward-looking statements

This Presentation contains certain forward-looking statements and comments about future events, including the Company’s expectations about the performance of its businesses, the effect of any funds raised for those businesses, and the future performance of the Company. Forward looking statements can generally be identified by the use of forward looking words such as, “expect”, “anticipate”, “likely”, “intend”, “should”, “could”, “may”, “predict”, “plan”, “propose”, “will”, “believe”, “opinion”, “could”, “may”, “forecast”, “project”, “estimate”, “target” and other similar expressions. All statements, other than statements of historical fact, included herein, including without limitation, statements regarding potential mineralisation, resources and reserves, exploration results, future expansion plans and development objectives of Dome Gold involve various risks and uncertainties.

Indications of, and guidance or outlooks on, future earnings, financial position or performance are also forward-looking statements and may include statements in this Presentation regarding the use of proceeds, future expansion plans and development objectives of Dome Gold involving various risks and uncertainties and the future performance of the Company. There can be no assurance that such statements will prove to be accurate and actual results and future events could differ materially from those anticipated in such statements.

Competent Persons Statement

The information contained in the report that relates to Mineral Resources is based on information compiled or reviewed by Peter Hinner, who is a Member of the Australasian Institute of Mining and Metallurgy. Mr Hinner is a consultant of the company and has sufficient experience that is relevant to the style of mineralisation and type of deposit under consideration and to the activity being undertaken to qualify as a Competent Person as defined in the 2012 Edition of the ‘Australasian Code for Reporting of Exploration Results, Mineral Resources and Ore Reserves’. Mr Hinner consents to the inclusion in the report of the matters based on his information in the form and context in which it appears.

Corporate Overview

ASX Code	DME
Shares on issue	419,887,762
Market capitalisation	\$18.9m
52 <u>week</u> high - low	\$0.045 – 0.195
Board & management holding (%)	10.6
Top 20 shareholding (%)	65.4
Auditors	KPMG
Registry	Computershare

Board & Management

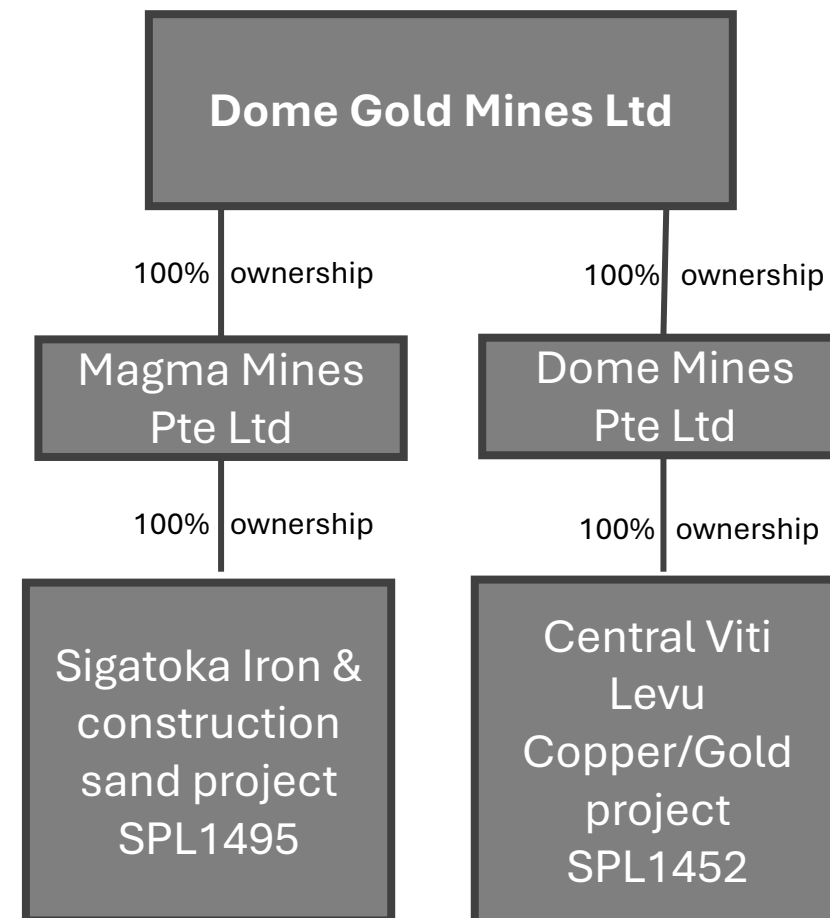
Chairman & Non-Executive Director	John V. McCarthy
Non-Executive Director	Tadao Tsubata
Non-Executive Director	Peter Hinner
Company Secretary	Marcelo Mora

Tenement	Name	Holder	Interest %	Area (hectares) at	
				31 March 2016	Expiry Date
SPL1452	Central Viti Levu	Dome Mines Ltd	100	33,213	3/07/2027
SPL1495	Sigatoka Ironsands	Magma Mines Ltd	100	2,522	24/11/2028

Corporate office – Sydney Australia. Fully staffed

Fiji office – Sigatoka, Viti Levu. Full time administrative and technical team

Group structure



Project location

Sigatoka iron & construction sands project located in the nation of Fiji on the main island of Viti Levu



Project summary

Dome Gold Mines Ltd (Dome) through its 100% owned subsidiary Magma Mines Pte Ltd (Magma) intend to establish a mining and processing operation near the mouth of the Sigatoka river in Fiji.

Magma Mines have a Special Prospecting License (SPL) SPL1495 over an area of approximately 2,522 hectares.

The company is in the final stage of a feasibility study as a requirement of the Fijian Mineral Resources Department (MRD) to convert its existing exploration license into a Mining License which will then allow it to begin construction and production.

All mining occurs on two **freehold properties** for the first seven to twelve years of operation. Activity then transitions to Koura Island and the Sigatoka River. All areas have been drilled and have **JORC mineral Resource Estimates**.

Mining and processing will be designed to operate at 200-300 t/h ore feed rate and **will generate titano-magnetite and construction sand products for sale**. The mining method uses a mobile sand feeder, fed by front end loader, which screens out coarse gravels and then slurries the sands with water and pumps the slurry to a fixed position processing plant.

The processing plant rejects undersize and oversize particles to produce an engineered ‘fine Aggregate’ construction sand compliant with Australian standard AS2758.1 as well as extracting magnetite using a simple magnet module that will be positioned beside the main sand plant.

The proposed mining and processing method utilise **simple, low risk and time proven methods and equipment** readily available around the world. All equipment and methods have been proven in both the heavy mineral sands, iron sands and construction sands industries. Preferred suppliers for the mobile sand feeding plant, sand processing plant and magnet module are all large globally recognised and respected equipment manufacturers.

From Financial Investment Decision the sand processing plant equipment will require a fabrication time at CFlo India of approximately 22 weeks and 4 weeks international shipping to site via Port Lautoka. Construction time on site is estimated at 6 weeks.



The Opportunity

A technically very simple, low capital cost, low operating cost, rapid to production project situated in a stable jurisdiction closer to Sydney than Perth

- Able to leverage off the worlds 50 billion tonne per annum demand for construction sands;
- A sand with unique properties that give is superior marine corrosion resistance properties;
- Construction sand project has a very quick pathway to production and revenue generation from mining licence approval by the Fiji mines department (MRD)
- Participation in a multi commodity company- iron, sands
- Fiji is a low sovereign risk neighbour with strong ties to Australia;
- Proximity to modern service, infrastructure airports
- Sigatoka project area only 1.5 hours drive from Nadi airport by highway & 2 hrs by Highway to Suva capital
- Only 4 hours flying time from Sydney with 9 international flights per day from Australia & elsewhere.
- Fiji mines department very supportive of the Sigatoka sands project and overnment wants mining of the river to go ahead to alleviate upstream flooding of the Sigatoka township - River resource is 'self replenishing
- Feasibility study currently underway for a sand & magnetite resource that could be in production within 6 months of FID and mining licence approval;
- Construction sand plants very low capital cost & simple mining methods compared to other mining projects
- Sand plants and magnet plants low capex/low opex and equally as important are 'low tech' significantly reducing risk profile

Domes 'cornerstone' Sigatoka magnetite & construction sands project

- Continuation of several key sub-studies and completion of the Sigatoka feasibility study estimated at 4 months;
- Upgrading of 'Club Masa' resource estimate to reserve status
- Engagement with main engineering design and construction groups for mining and processing equipment;
- Submission to Fiji mines department (MRD- Mineral Resources Department) for approval and sign-off estimated at 1 month
- EIA public consultation period – 1 month
- MRD grant of mining licence – 1 month;
- Dome management Financial Investment Decision – 6-8 month timeline to FID
- Pre-engineering design, capital equipment, working capital to full production
- From order of mining equipment to commissioning and full production estimated at 6 months

Time estimates for government approvals have all been provided by the Fiji MRD

Major Studies Completed

- ✓ Boral concrete sand testing
- ✓ Groundworks fine aggregates petrology
- ✓ IHC magnetite test
- ✓ All metallurgical testing
- ✓ Longi magnetite tests
- ✓ BASF slimes settling tests
- ✓ BMT river survey phase I
- ✓ Geotechnical drilling
- ✓ Geotechnical modelling
- ✓ JORC Mineral Resource Estimate - Magnetite
- ✓ JORC Mineral Resource Estimate – Construction Sand

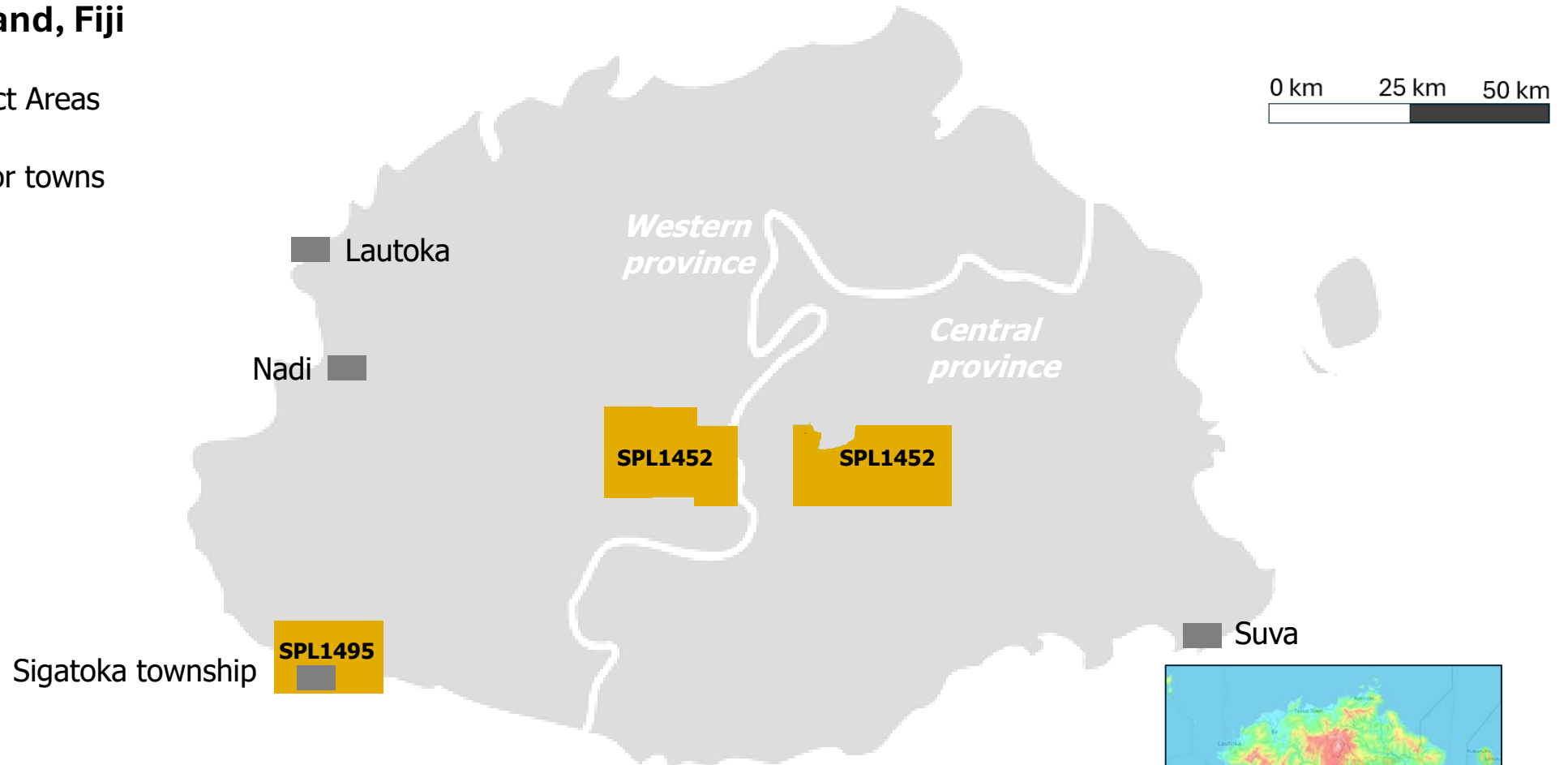
Studies Underway

- BMT river modelling phase II
- IHC 200 t/h full scale sand plant design & costing
- AMC mine plan & scheduling
- Hydrology
- Barge loader design & capital cost
- Barging operating cost estimates
- Pitch Black engineering design
- Pitch Black financial modelling
- Pitch Black supporting infrastructure design & costing
- Magnetite offtake
- Export shipping

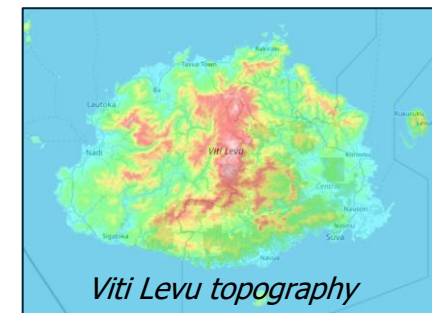
Dome exploration & development tenements

Viti Levu Island, Fiji

- Dome Project Areas
- Capital/major towns



Sigatoka SPL1495 magnetite & sand project – 100% owned by Dome 2,522 Hectares licence area
Nadrau SPL1452 porphyry copper gold project – 100% owned by Dome



Overview of Domes iron and sand project

LARGE SCALE LONG LIFE CONSTRUCTION SANDS PROJECT

- Located at Sigatoka on the Coral Coast only 1.5 hours drive by highway from Nadi international airport
- Quality construction sand with unique qualities suitable for marine concrete applications & general construction.
- **Tested by Boral Technical Services division** in Sydney
- Potentially 30+ year resource available for mining
- **Very quick pathway to production and revenue generation** once mining licence approved by the Fiji mines department (MRD)
- A multi commodity company

MAGNETITE IRON SANDS

- **High quality magnetite** sands able to product a 59-62% Fe concentrate grade.
- Low in impurities such as titanium compared to most other magnetite sands
- Magnetite recovered from sands using simple drum magnets and water
- **MOU for local offtake** and ready market for the balance of production in China

Sand demand in Fiji

Rigorous testing of Sigatoka sands was carried out by Boral Technical services centre in Sydney and confirmed compliance with Australian standards (AS 2758.1, AS 3600 B2), ASR resistance, and suitability for marine exposure—all determinants of product quality.

- Doubtful whether other locally produced sands meet the rigorous standards required for many commercial uses
- There is strong and growing demand for washed sand and gravel in Fiji driven by:
 - Government led infrastructure development: Road upgrades, ports, bridges, and coastal defences.
 - Tourism sector recovery: Hotels, resorts, and marine jetties require high-grade concrete and decorative sands.
 - Housing and urbanisation: Rapid population growth in urban centres (e.g., Suva, Nadi) has triggered a surge in demand for quality construction materials.
 - The current domestic supply is limited in consistency and volume, especially in marine-grade washed sand, making Sigatoka's resource valuable for high-spec applications like precast, marine, and pavement-grade concrete.

Construction Sands

CONSTRUCTION SANDS PROJECT

- Very low capital and operating costs
- Located on freehold lands & owners very receptive to mining
- Growing Fiji and Pacific region demand for sands meeting concrete engineering standards
- Simple process plant, no chemicals, just sand and water
- Sand (fine aggregate) is a critical material used in construction and a key ingredient in concrete, asphalt, base and the sub-base of flexible and rigid pavements.

Test results on construction sand produced during Pilot Plant processing of a bulk sample from the Sigatoka Project in Fiji. The tests were conducted under the supervision of the Technical Manager at Boral Materials Technical Services laboratory in Sydney, Australia's largest concrete testing facility.

Based on these comprehensive results it was concluded that the processed sand tails conform to fine aggregate requirements to be used for engineering processes in Australia. The sands have a good abrasion, disintegration and abrasion resistance, being non-reactive for ASR.

As an indication of its quality concretes made using Sigatoka sands meet or exceed the various properties of sands currently being supplied into the Sydney market

Dome construction sand used as fine aggregates in high performance concrete mixes, conforms to the requirements of AS 3600 – Concrete structures for B2 exposure classification (surface member above-ground in coastal areas and in any climate zone and surface in maritime structures in sea water - permanently submerged);



Magnetite

- Titanomagnetites are commonly derived from beach sands and very easily extracted from sands using ‘wet drum magnets’, a very simple low energy process.
- Sigatoka magnetite is very low in various impurities compared to other iron sands magnetite as used to blend conventional iron ores in steel making
- Sigatoka magnetite concentrate has a very high iron grade of 59-62% Fe compared to most of the Asian and central/south American iron sands.

Examples of wet ‘low intensity’ drum magnets are shown below



Mining method & equipment

Mining equipment is all skid mounted & consists of:

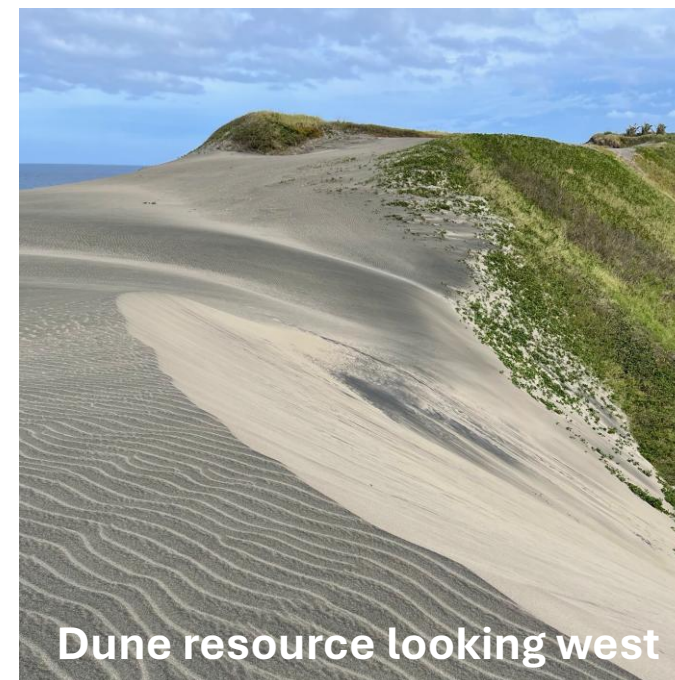
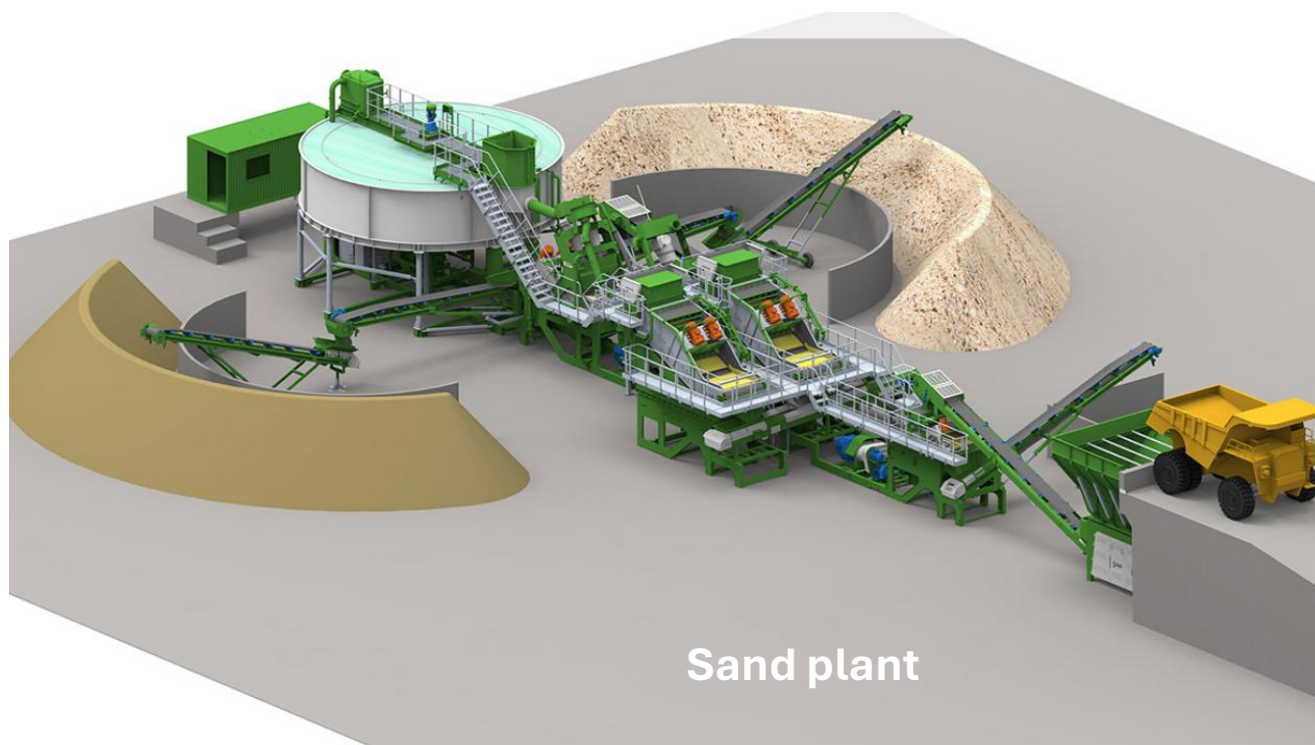
- A mobile feed hopper located about 50m from the mining face and into which front-end-loaders dump excavated sands
- A coarse screening module and diesel generators
- A slurring module that mixes the screened sands with water
- A pumping module that pumps sand slurry to the sand plant



Sand processing & magnetite recovery

The sand & magnetite process

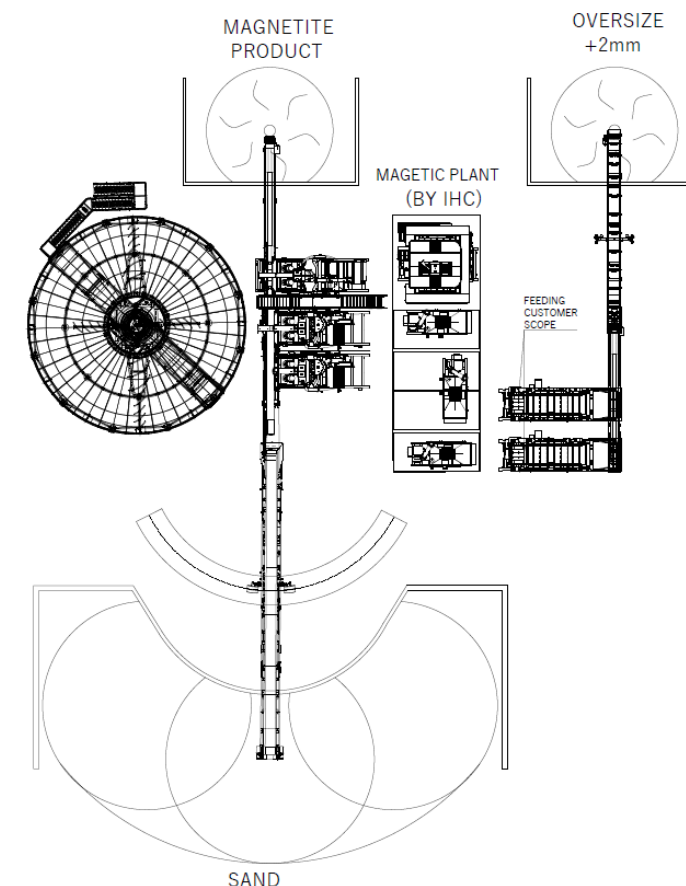
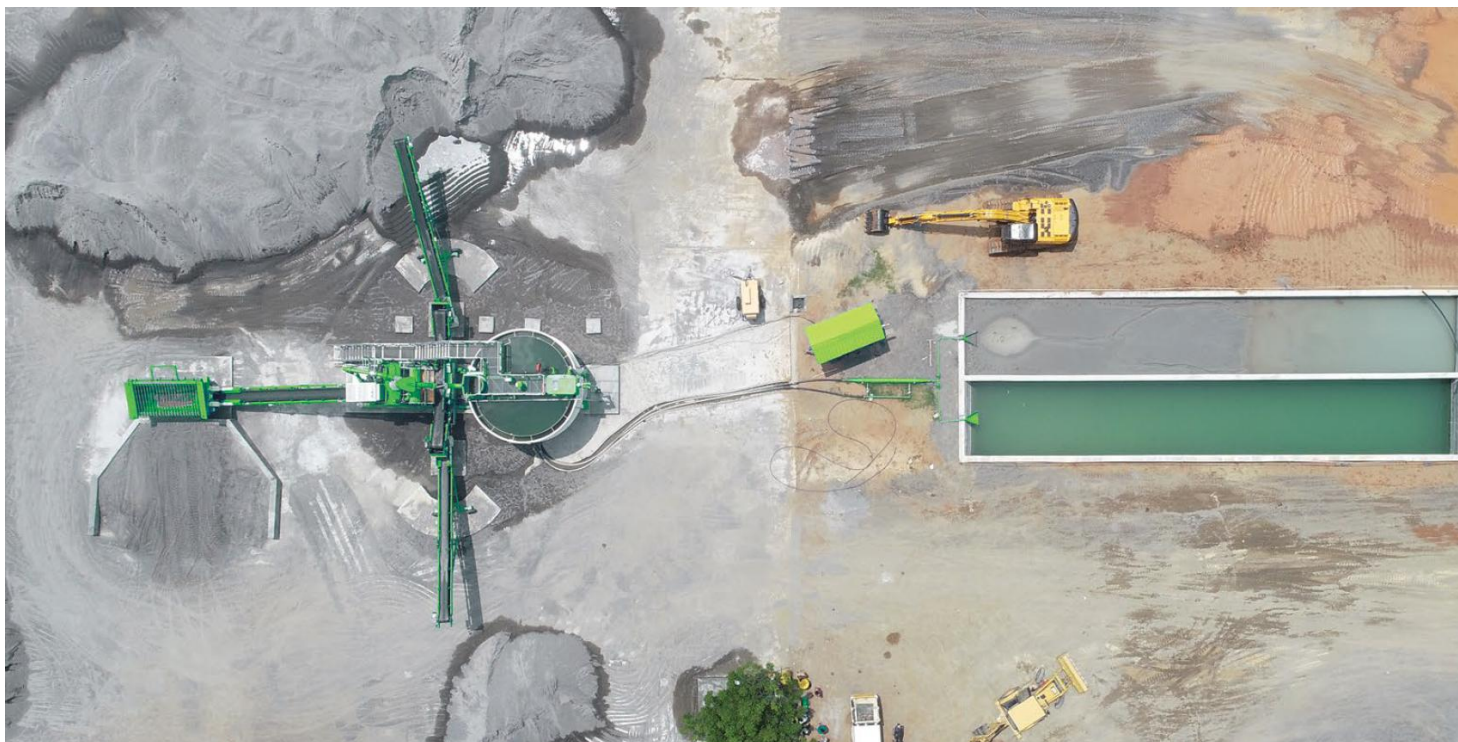
- Ultra simple mining and processing method
- Low capital/operating cost “off the shelf” sand process plant
- Sand plant shipped to Fiji in containers for quick assembly
- Mobile mining unit shipped to Fiji in containers for quick assembly



Sand processing & magnetite recovery

Typical sand screening and process plant layout showing dry feed hopper, process water clarifier/thickener, product stockpiles and water storage tanks.

Note that colour image does not show a magnetite recovery plant which would be positioned to the side to produce magnetite product. Magnetite plant is shown in the engineering General Arrangement drawing.



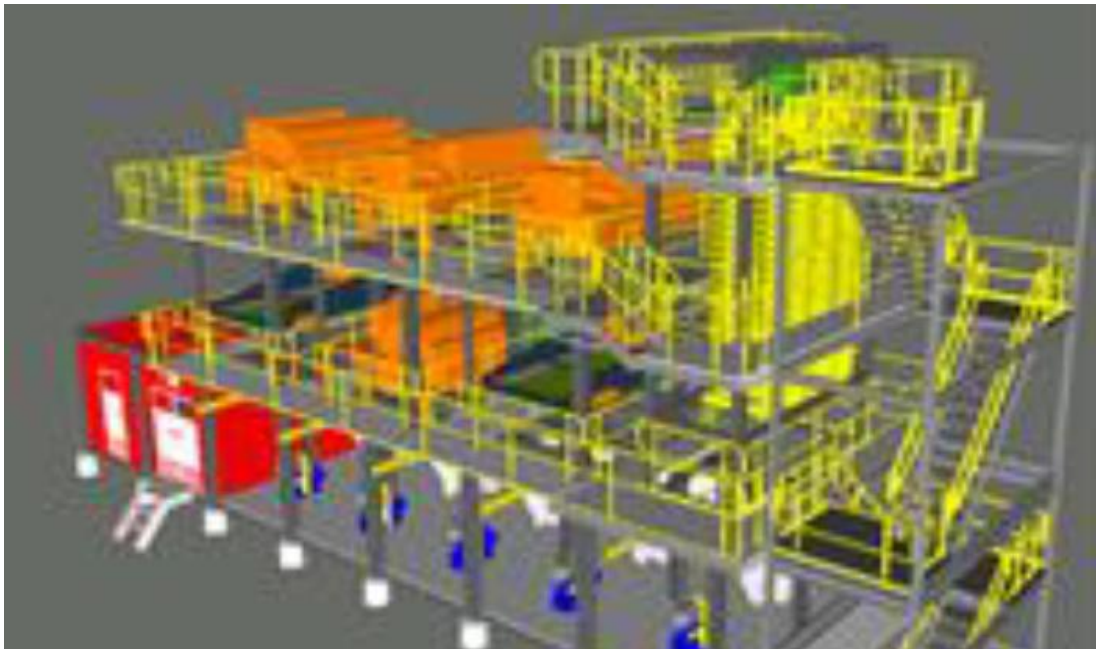
Sand and magnet plant proposed layout

Sand processing & magnetite recovery

The sand & magnetite process

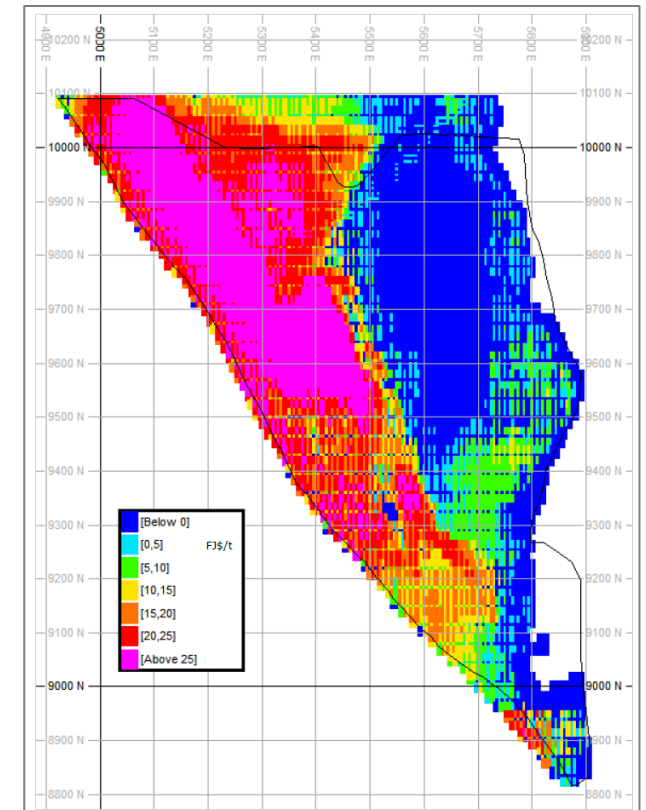
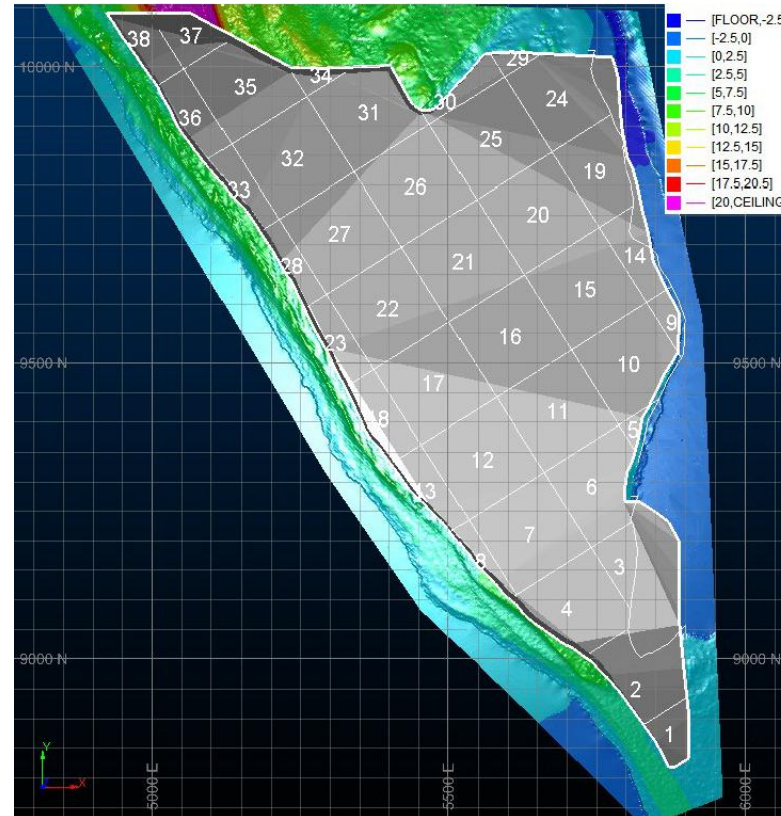
- Global mining technology company to provide a bespoke modular magnet plant that will be connected to the side of a standard design sand plant
- Plant shipped to Fiji in containers and bolted together on site

Royal IHC Mining magnetite separation module



Sigatoka mine planning – stage 1

- Australia Mining Consultants preliminary mine plan for stage 1 which is years 1-12 for mining in only the first of 3 main resource areas.
- Years 1-12 “Club Masa” mining blocks and value plan shown below.
- Mining rate can be ramped up easily from 0.5Mtpa to 0.9Mtpa sand product without additional equipment.



Demand Side Dynamics

Construction Sand

- 50 billion tonnes per annum global consumption
- Construction sands are the single largest mined and traded mineral commodity in the world
- Consumption exceeds both iron ore and coal combined and growing at 4-6% per annum.
- Growing pacific region demand for bulk sands
- Million tonne per annum demand in Fiji (UNDP 2018 Baseline Assessment of Development Minerals in Fiji)
- Domes construction sands will meet AS2758.1
- Future potential to supply the Pacific Islands, Australian or asian markets

Titano-magnetite

- Strong demand from China as an iron ore supplement feedstock
- Local steel smelter rebar manufacturer MOU for 30,000 tonnes per annum.
- Remaining 70% of production to China

Construction Sand

- Globally, legally mined sands are in short supply leading to illegal mining.
- Dome will have in excess of 30 years of supply once the Fiji mines department issues a mining licence. The currently drilled river resource only covers 3km of the Sigatoka river. Approval to mine another 18km of river length is anticipated.
- The Sigatoka river resource effectively becomes a 'replenishable' supply

Titanomagnetite

- Sigatoka titanomagnetite has a high iron grade at 59-62% Fe and very low titanium content of 4% TiO₂ making it one of the best on the market.
- China has historically bought all available iron sands magnetite production throughout the globe
- MOU already signed for 30% of production with local offtaker for small steel smelter.
- Discussions already underway with buyers in the north China Tianjin area.

JORC Mineral Resource Estimates

MAGNETITE - The Sigatoka project contains three reported JORC magnetite resources:

- Kulukulu south – also known as ‘Club Masa’
- Koura Island
- Sigatoka River

It is anticipated that the current phase of mine modelling and feasibility study will allow the Kulkulu south (Club Masa) magnetite Indicated Mineral Resource Estimate to be upgrade to a JORC Reserve status.

The resource table shown uses Dome Gold Mines published JORC Mineral Resource Estimates

Resource	Sub-category	Inferred	Indicated
Kulukul South (Club Masa)	Tonnes(Mt)	0.6	34.0
	Average %HM	48.0	20.0
	HM tonnes(kt)	295	6,710
	Mag1 tonnes(kt)	74	1,707
Sigatoka River	Tonnes(Mt)	5.3	23.9
	Average %HM	11	12
	HM tonnes(kt)	570	2,755
	Mag1 tonnes(kt)	81	416
Koroua Island	Tonnes(Mt)		52.5
	Average %HM		13
	HM tonnes(kt)		6,935
	Mag1 tonnes(kt)		1,595
Totals	Tonnes(Mt)	5.9	110.4
	Average %HM	15	15
	HM tonnes(kt)	865	16,400
	Mag1 tonnes(kt)	155	3,718

JORC Mineral Resource Estimates

CONSTRUCTION SANDS – A JORC resource has only been determined for the Kulukulu south (Club Masa) area.

A JORC compliant construction sands resource estimate was produced by SLR (previously Groundworks Plus) in December 2025. Construction materials are specifically not covered under the current JORC Code however, Domes sands resource report is aligned to the general philosophy of the Code regarding items of transparency, materiality, and reporting terminology.

Dome have previously reported a total resource of 189.3 million tonnes of Iron Sands in the broader Sigatoka Project Area of which a significant portion of this material is likely to be suitable for use as construction sands/gravels given its similar geological setting.

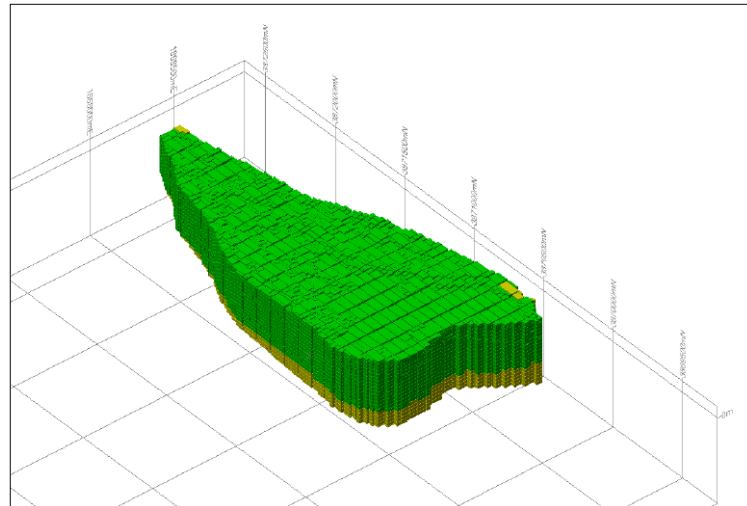
SLR wrote “Silica rich dune sands with relevant grading and engineering characteristics are uncommon on the majority of the smaller Pacific Islands further supporting reasonable prospects of economic extraction in that this resource is scarce in a region which requires suitable quality fine aggregate for use as a construction material.

Numerous global studies coupled with a detailed review of industry information confirms that there is a looming paucity of silica and construction sands worldwide.”

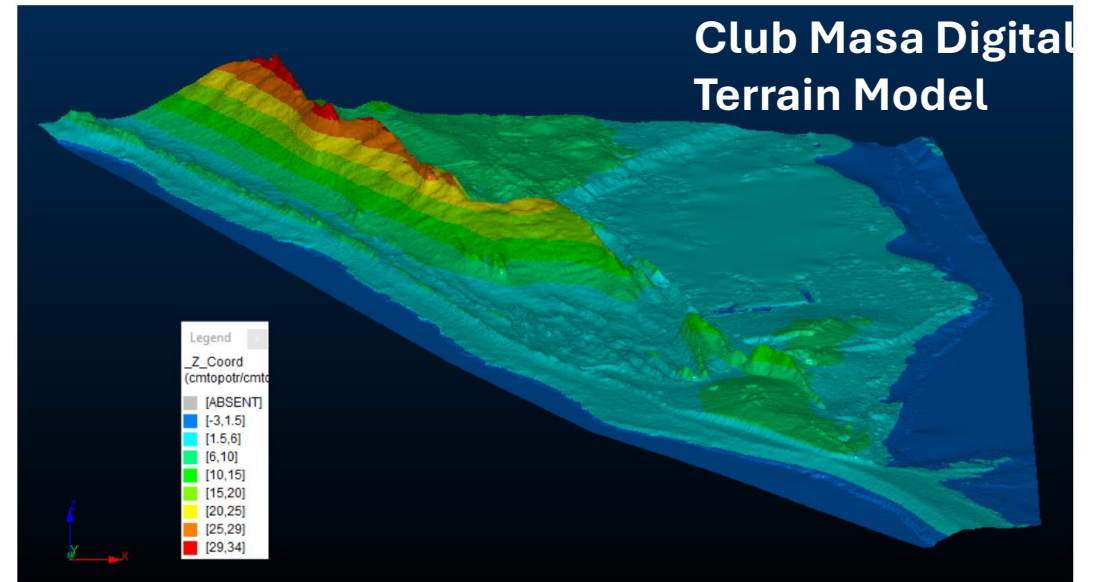
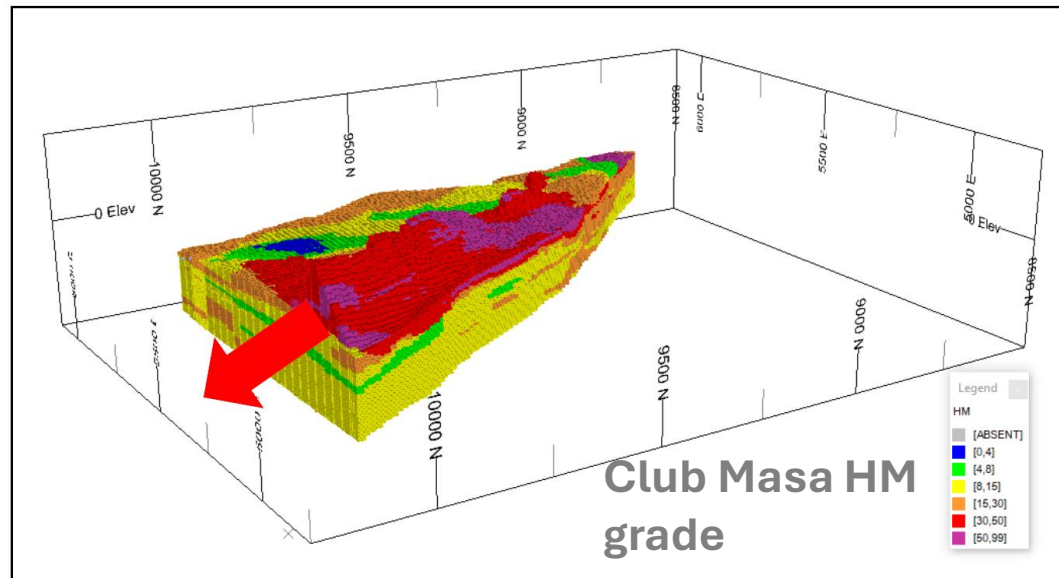
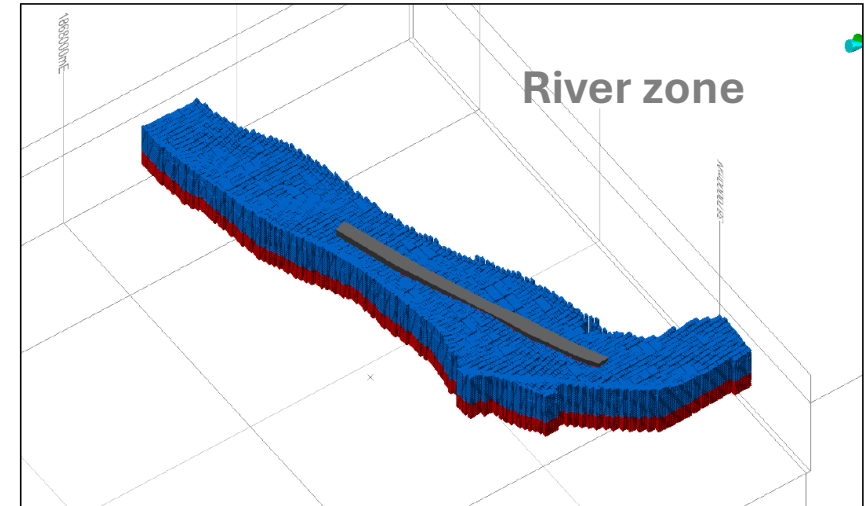
Based on SLRs conservative estimate of available compliant sands in the Club Mase deposit the following estimate was made of the contained sands in the Sigatoka River and Koroua Island resources. The overall total available for sale would be 63.2Mt.

Resource project domain	Total Resource tonnes (Mt)*	Magnetite Mt	Construction sand Mt#
Kulukulu South (Club Masa)	34.0	1.707	19.6
Sigatoka River	23.9	0.410	13.7
Koroua Island	52.5	1.595	29.9
Total	110.4	3.712	63.2

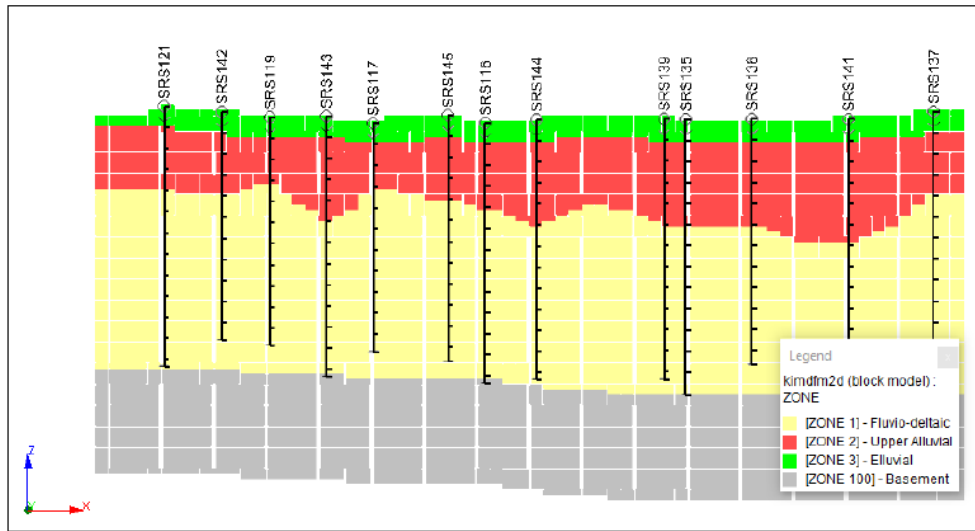
Sigatoka resource block models



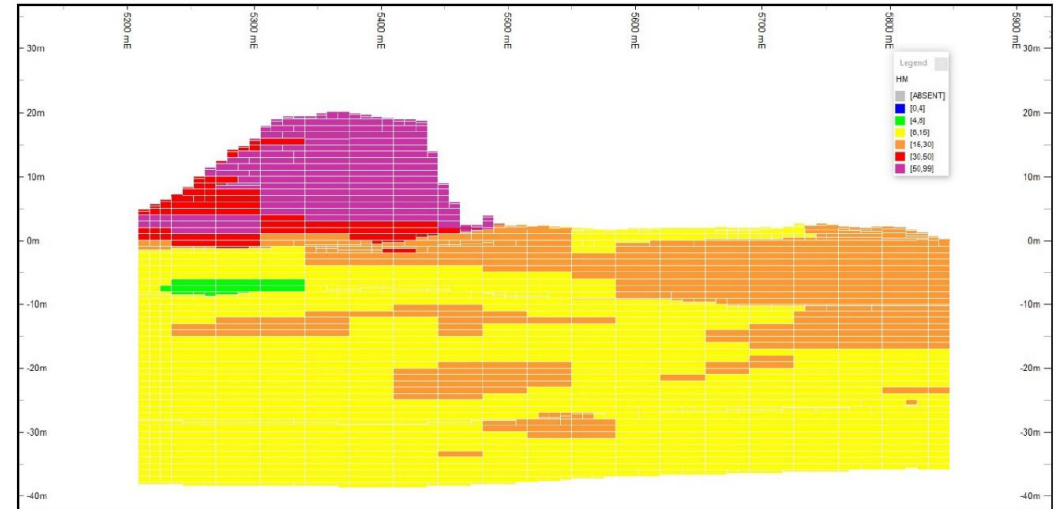
Block models provided to illustrate the three different resources that were drilled



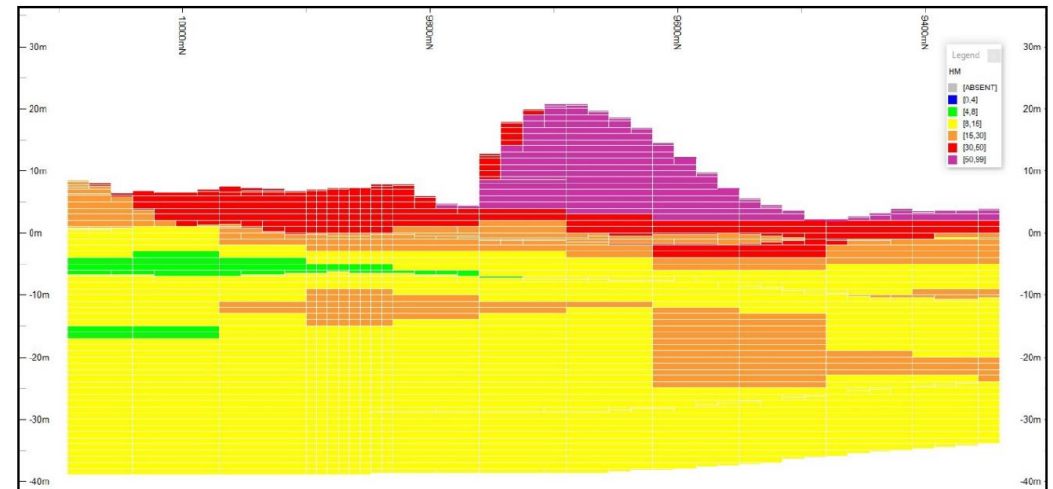
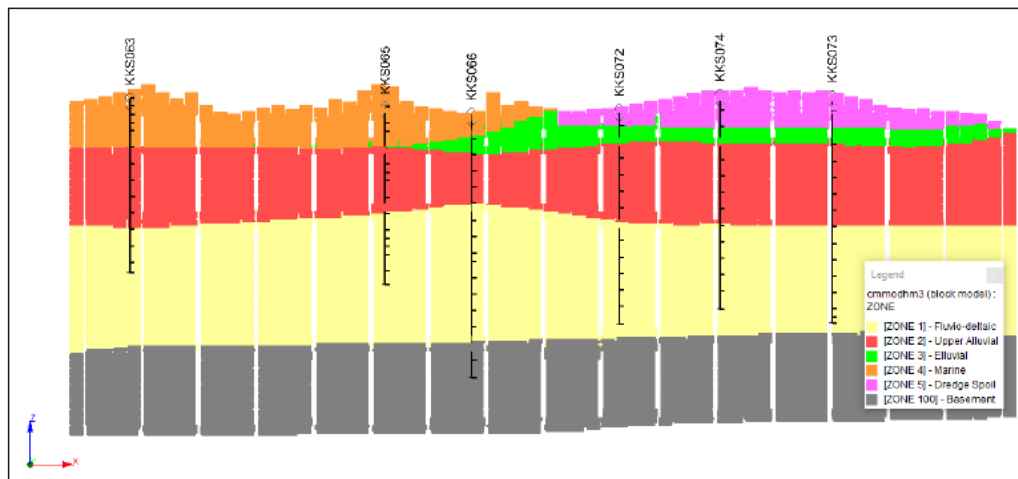
Sigatoka resource block model sections



Koroua Island cross section, wire frame generated.
For illustration only



Club Masa heavy mineral grade block model cross sections,
For illustration only



Contact:

Dome Gold Mines Limited (ASX:DME)

Address: The Brewery, Suite 605, Level 6
Central Park Ave, Chippendale NSW 2008

T: +61 02 82035620

E: info@domegoldmines.com.au

W: www.domegoldmines.com.au